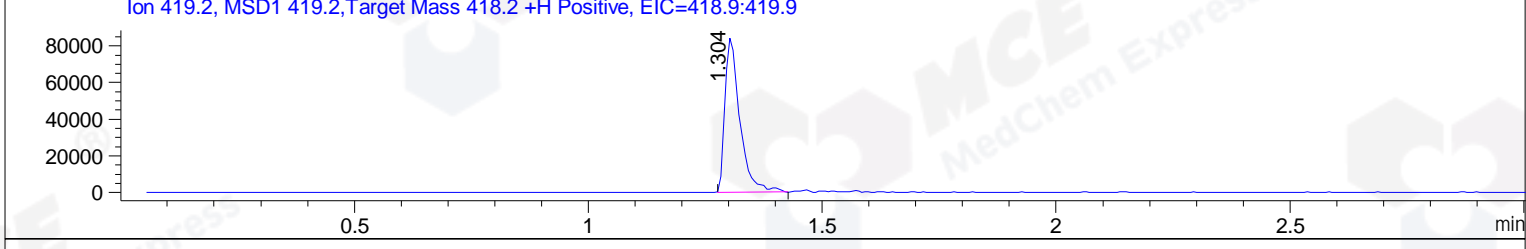
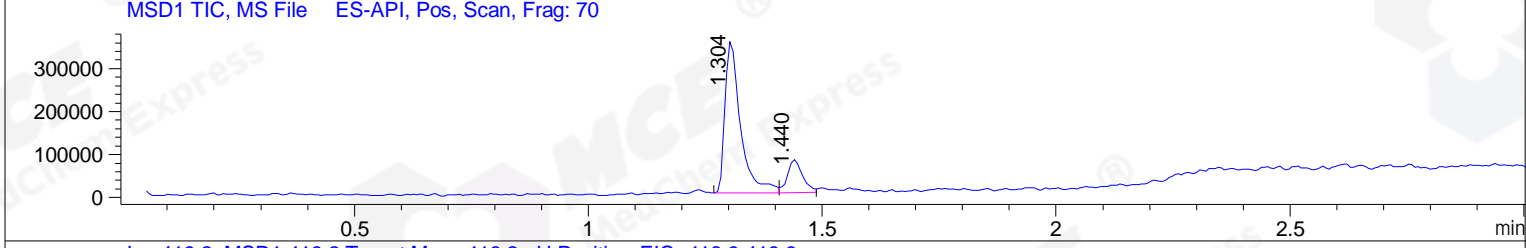
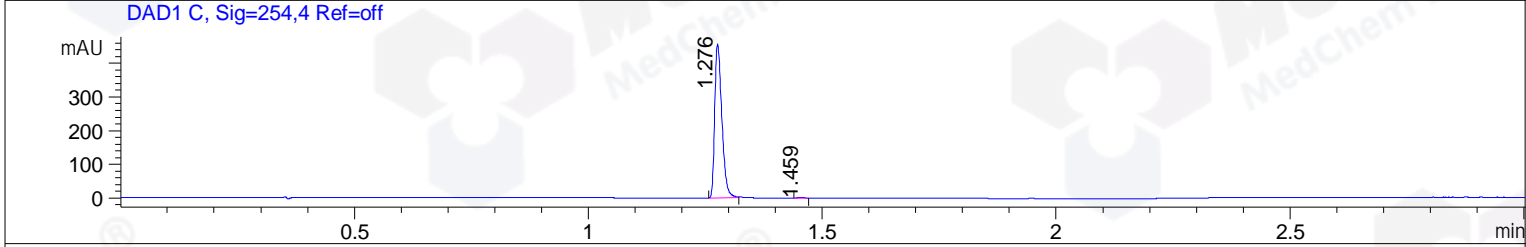
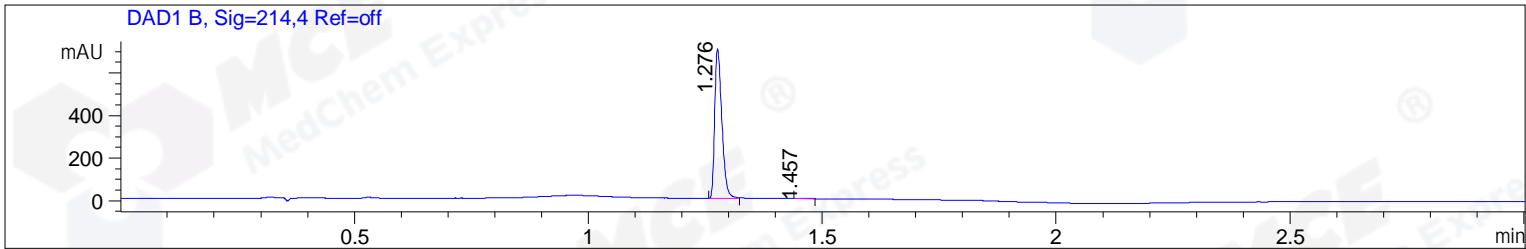


File ..1\DATA\2018\20181101\485\BIZ2018-N02-CXL3.D Tgt Mass (CHM):
 Injection Date : 2 Nov 18 5:33 pm +0800 Seq. Line : 6
 Sample Name : BIZ2018-N02-CXL3 Location : P2-E-03
 Acq. Operator : LQ_1052 Inj : 1
 Spec. Reported : MS Integration Inj Volume : 1 ul
 Acq. Method : D:\Chem32\1\data\2018\20181101\485\1-POS-3MIN-1.M
 Analysis Method : D:\CHEM32\1\DATA\2018\20181101\485\1-POS-3MIN-1.M
 Catalog No : HY-112782 Batch#34673 A-RP-314
 Method Info : Mobile Phase: A: water(0.01%TFA) B:ACN(0.01%TFA)
 Gradient: 5% to 95%B within 1.3 min
 Flow Rate :1.8ml/min
 Column :SunFire C18, 4.6*50mm,3.5um A-RP-314
 Oven Temperature : 45



Integration Results for DAD1 B, Sig=214,4 Ref=off

RetTim	Width	Area	Height	Area%	MS (+)
1.28	0.02	748.44	701.84	99.68	419
1.46	0.03	2.39	1.37	0.32	242

Integration Results for DAD1 C, Sig=254,4 Ref=off

RetTim	Width	Area	Height	Area%	MS (+)
1.28	0.02	487.22	456.62	99.85	419
1.46	0.02	0.73	0.58	0.15	242

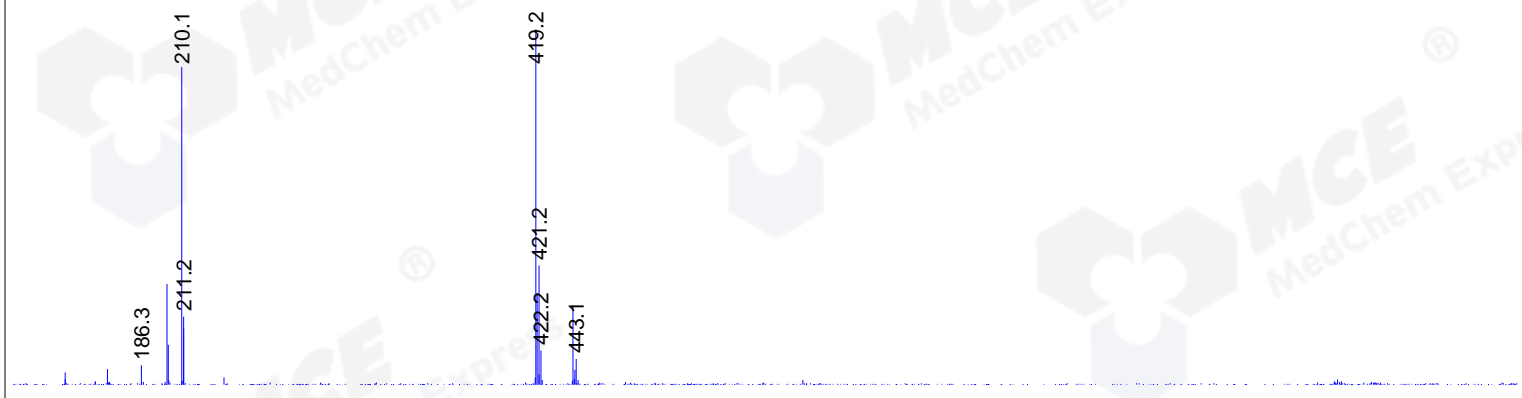
Integration Results for MSD1 TIC, MS File

RetTim	Width	Area	Height	Area%	MS (+)
1.30	0.03	817121.31	355566.06	82.80	419
1.44	0.03	169721.69	76204.67	17.20	242

Ret. Time: 1.30

<<<< POSITIVE SPECTRA >>>>

ES-API Positive



Ret. Time: 1.44

ES-API Positive

