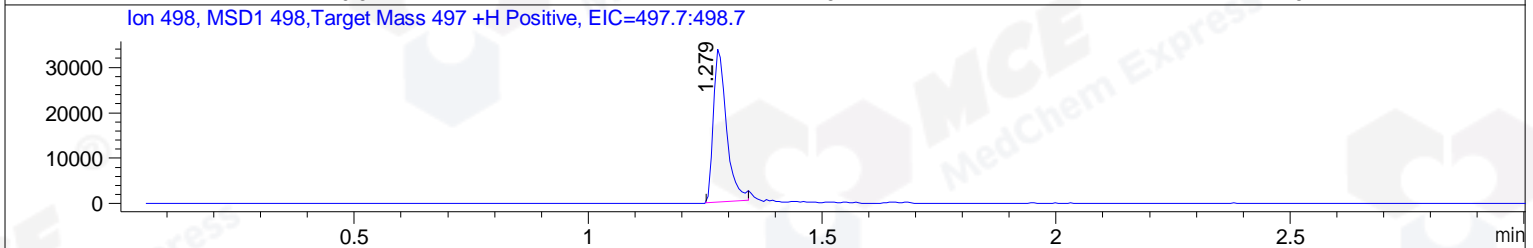
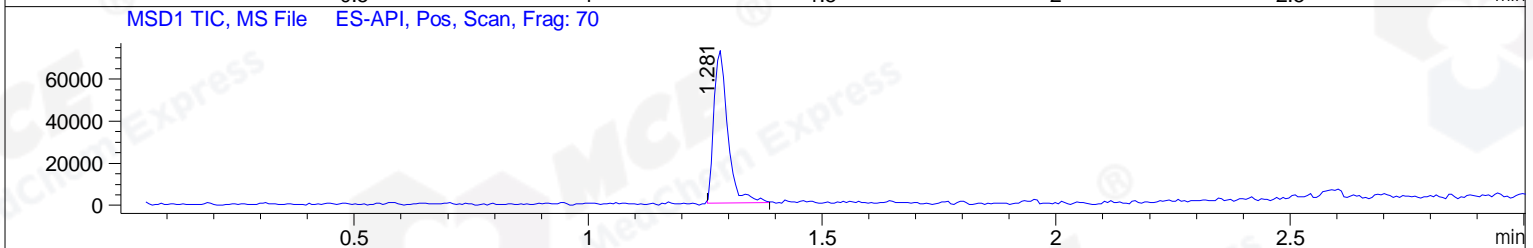
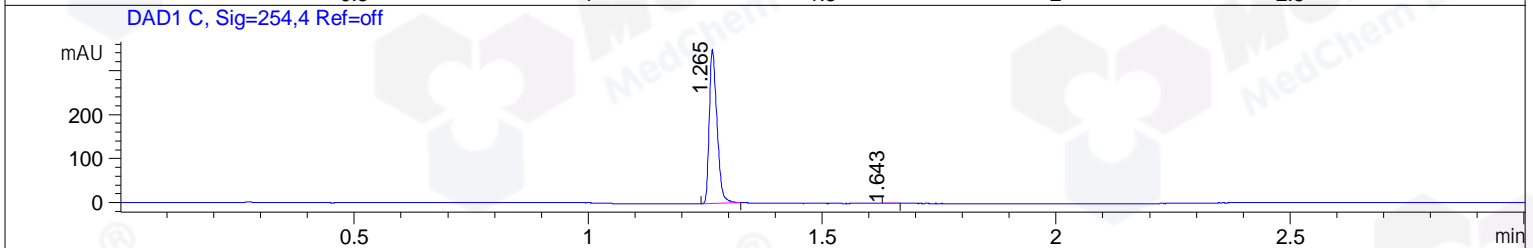
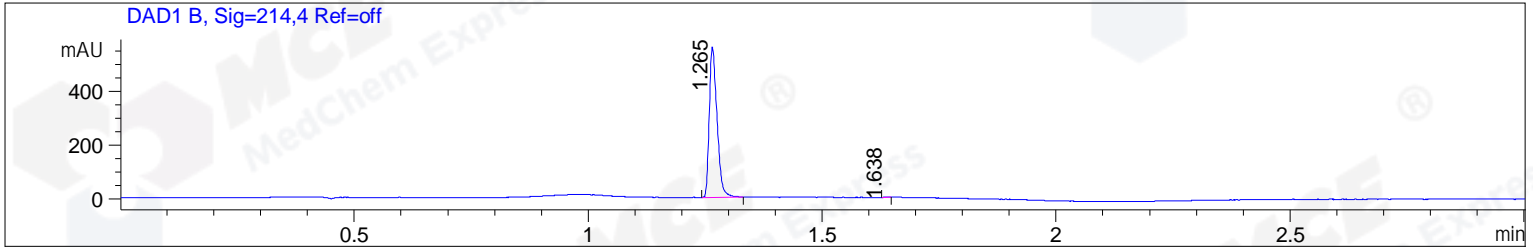


File ..\DATA\2019\20191127\778\BIZ2019-N25-CXL14.D Tgt Mass (CHM):  
 Injection Date : 27 Nov 19 10:28 am +0800 Seq. Line : 21  
 Sample Name : BIZ2019-N25-CXL14 Location : P1-C-09  
 Acq. Operator : ZJ\_1432 Inj : 1  
 Spec. Reported : MS Integration Inj Volume : 0.25 ul  
 Acq. Method : D:\Chem32\1\data\2019\20191127\778\1-POS-3MIN.M  
 Analysis Method : D:\CHEM32\1\DATA\2019\20191127\778\1-POS-3MIN.M  
 Catalog No : HY-112815 Batch# 56774  
 Method Info : Mobile Phase: A: water(0.01%TFA) B:ACN(0.01%TFA)  
 Gradient: 5% to 95%B within 1.3 min  
 Flow Rate :1.8ml/min  
 Column :SunFire C18, 4.6\*50mm,3.5um A-RP-433  
 Oven Temperature : 45



Integration Results for DAD1 B, Sig=214,4 Ref=off

RetTim	Width	Area	Height	Area%	MS (+)
1.27	0.02	638.14	557.76	99.90	498
1.64	0.01	0.63	0.96	0.10	ND

Integration Results for DAD1 C, Sig=254,4 Ref=off

RetTim	Width	Area	Height	Area%	MS (+)
1.27	0.02	398.20	350.33	99.80	498
1.64	0.02	0.82	0.67	0.20	ND

Integration Results for MSD1 TIC, MS File

RetTim	Width	Area	Height	Area%	MS (+)
1.28	0.03	150383.88	72988.26	100.00	498

Ret. Time: 1.28

<<<< POSITIVE SPECTRA >>>>

ES-API Positive

