

File ..\DATA\2019\20190222\559\BIZ2019-221-CXL30.D Tgt Mass (CHM):

Injection Date : 22 Feb 19 12:24 pm +0800 Seq. Line : 39

Sample Name : BIZ2019-221-CXL30 Location : P2-B-07

Acq. Operator : LQ\_1052 Inj : 1

Spec. Reported : MS Integration Inj Volume : 1 ul

Acq. Method : D:\Chem32\1\data\2019\20190222\559\1-POS-3MIN-1.M

Analysis Method : D:\CHEM32\1\DATA\2019\20190222\559\1-POS-3MIN-1.M

Catalog No : HY-112859 Batch#37685-20190221

Method Info : Mobile Phase: A: water(0.01%TFA) B:ACN(0.01%TFA)

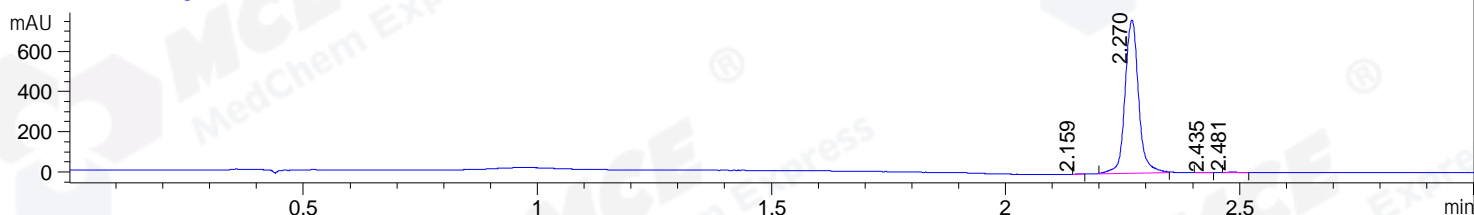
Gradient: 5% to 95%B within 1.3 min

Flow Rate :1.8ml/min

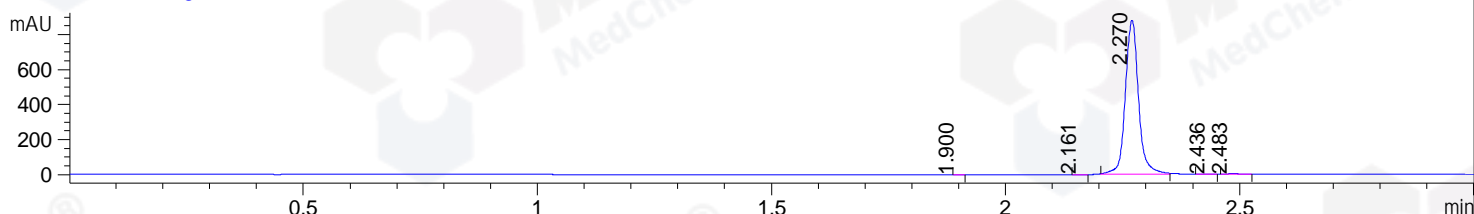
Column :SunFire C18, 4.6\*50mm,3.5um A-RP-314

Oven Temperature : 45

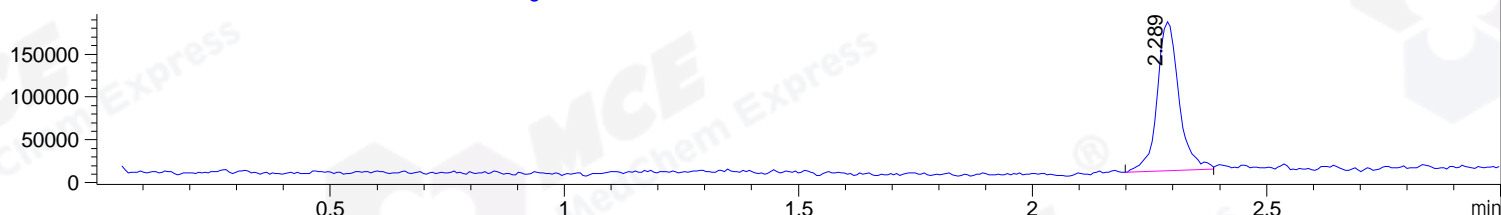
DAD1 B, Sig=214,4 Ref=off



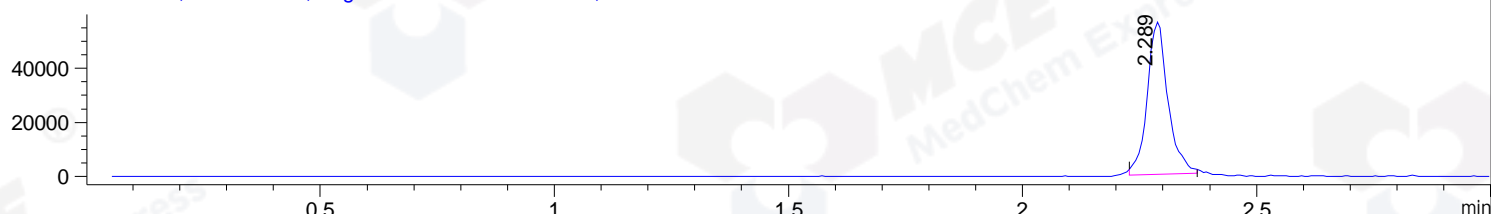
DAD1 C, Sig=254,4 Ref=off



MSD1 TIC, MS File ES-API, Pos, Scan, Frag: 70



Ion 712.2, MSD1 712.2, Target Mass 711.2 +H Positive, EIC=711.9:712.9



Integration Results for DAD1 B, Sig=214,4 Ref=off

RetTim	Width	Area	Height	Area%	MS (+)
2.16	0.02	1.31	1.24	0.08	142
2.27	0.03	1540.76	763.36	99.56	712
2.44	0.03	1.60	0.92	0.10	142
2.48	0.03	3.93	1.96	0.25	142

Integration Results for DAD1 C, Sig=254,4 Ref=off

RetTim	Width	Area	Height	Area%	MS (+)
1.90	0.02	0.35	0.36	0.02	ND
2.16	0.02	1.73	1.41	0.10	142
2.27	0.03	1721.52	879.26	99.50	712
2.44	0.03	1.28	0.66	0.07	142
2.48	0.04	5.22	2.31	0.30	142

Integration Results for MSD1 TIC, MS File

RetTim	Width	Area	Height	Area%	MS (+)
--------	-------	------	--------	-------	--------

2.29      0.05      566175.38      174324.55      100.00      712

Ret. Time: 2.29

<<<< POSITIVE SPECTRA >>>>

ES-API Positive

