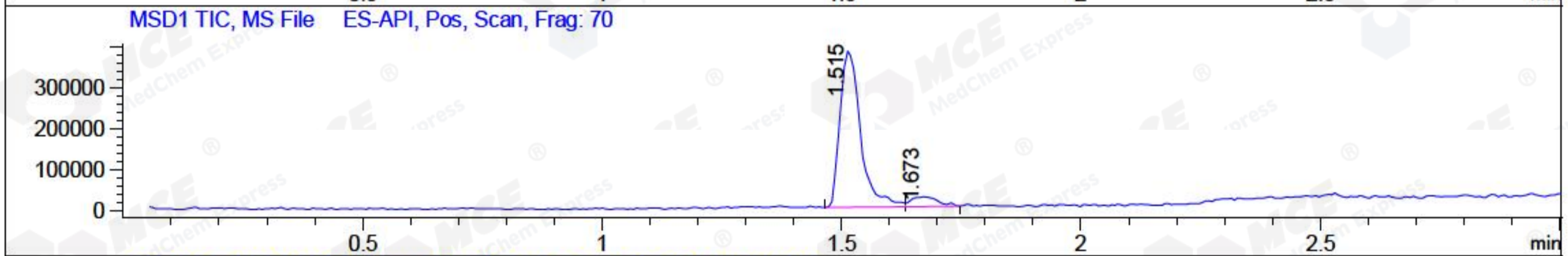
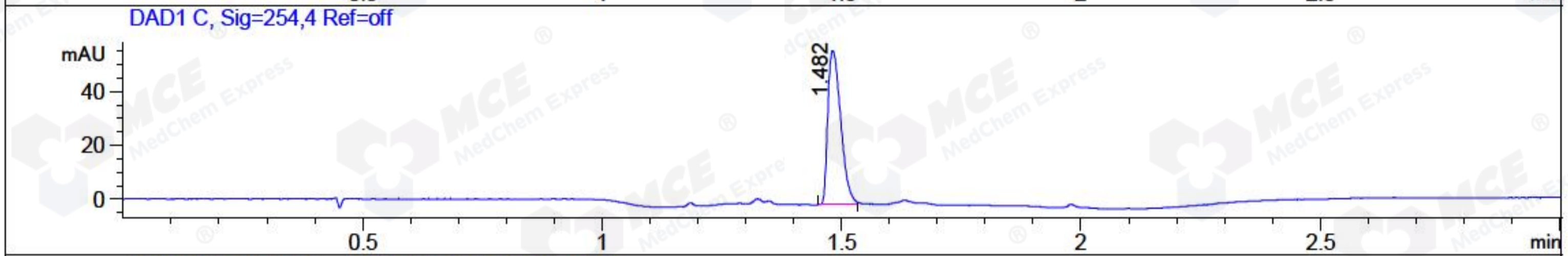
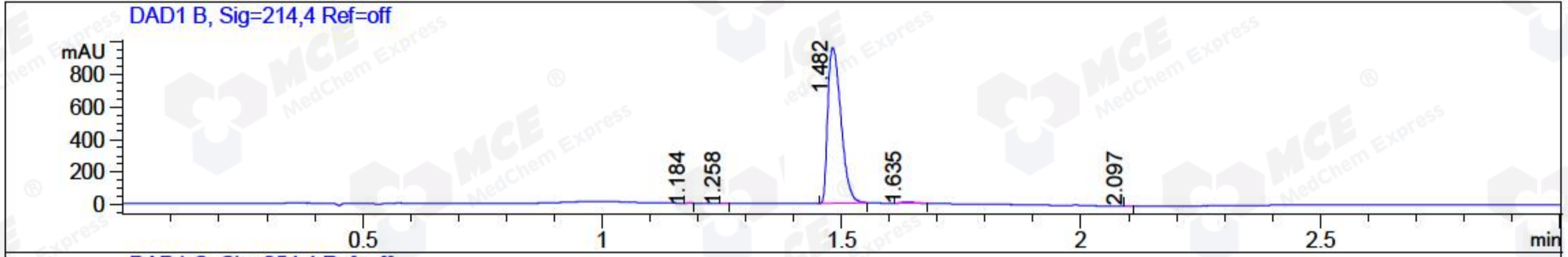


File ..1\DATA\2018\20181116\495\BIZ2018-N15-CXL2.D Tgt Mass (CHM):  
 Injection Date : 16 Nov 18 12:53 pm +0800 Seq. Line : 34  
 Sample Name : BIZ2018-N15-CXL2 Location : P2-F-07  
 Acq. Operator : LQ\_1052 Inj : 1  
 Spec. Reported : MS Integration Inj Volume : 1 ul  
 Acq. Method : D:\Chem32\1\data\2018\20181116\495\1-POS-3MIN-1.M  
 Analysis Method : D:\CHEM32\1\DATA\2018\20181116\495\1-POS-3MIN-1.M  
 Catalog No : HY-112904 Batch#34448 A-RP-314  
 Method Info : Mobile Phase: A: water(0.01%TFA) B:ACN(0.01%TFA)  
 Gradient: 5% to 95%B within 1.3 min  
 Flow Rate : 1.8ml/min  
 Column :SunFire C18, 4.6\*50mm,3.5um A-RP-314  
 Oven Temperature : 45□



Integration Results for DAD1 B, Sig=214,4 Ref=off

RetTim	Width	Area	Height	Area%	MS (+)
1.18	0.01	0.59	0.72	0.03	ND
1.26	0.02	0.69	0.76	0.04	ND
1.48	0.03	1834.29	956.64	99.00	400
1.64	0.03	16.77	8.18	0.91	508
2.10	0.01	0.52	0.74	0.03	ND

Integration Results for DAD1 C, Sig=254,4 Ref=off

RetTim	Width	Area	Height	Area%	MS (+)
1.48	0.03	106.89	57.10	100.00	400

Integration Results for MSD1 TIC, MS File

RetTim	Width	Area	Height	Area%	MS (+)
1.51	0.05	1149863.00	383426.31	92.40	400
1.67	0.05	94603.00	24510.89	7.60	508



Ret. Time: 1.51

<<<< POSITIVE SPECTRA >>>>

ES-API Positive



Ret. Time: 1.67

ES-API Positive

