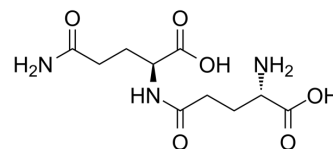


## H-γ-Glu-Gln-OH

Cat. No.:	HY-113003
CAS No.:	10148-81-9
Molecular Formula:	C <sub>10</sub> H <sub>17</sub> N <sub>3</sub> O <sub>6</sub>
Molecular Weight:	275.26
Target:	Others
Pathway:	Others
Storage:	Sealed storage, away from moisture and light Powder    -80°C    2 years -20°C    1 year  * In solvent : -80°C, 6 months; -20°C, 1 month (sealed storage, away from moisture and light)



### SOLVENT & SOLUBILITY

#### In Vitro

DMSO : 100 mg/mL (363.29 mM; Need ultrasonic)

Concentration	Solvent	Mass		
		1 mg	5 mg	10 mg
Preparing Stock Solutions	1 mM	3.6329 mL	18.1646 mL	36.3293 mL
	5 mM	0.7266 mL	3.6329 mL	7.2659 mL
	10 mM	0.3633 mL	1.8165 mL	3.6329 mL

Please refer to the solubility information to select the appropriate solvent.

### BIOLOGICAL ACTIVITY

#### Description

H-γ-Glu-Gln-OH is a hydrophilic peptide and can be conjugated to drugs. The carrier composed of H-γ-Glu-Gln-OH has the characteristics of high water solubility and drug-loading capacity, good biocompatibility, low toxicity, improved tumor targeting ability, and anti-tumor efficacy<sup>[1]</sup>.

### REFERENCES

[1]. Yu J, et al. Self-Assembled Tumor-Penetrating Peptide-Modified Poly(L-γ-glutamylglutamine)-Paclitaxel Nanoparticles Based on Hydrophobic Interaction for the Treatment of Glioblastoma. *Bioconjug Chem.* 2017 Nov 15;28(11):2823-2831.

---

**Caution: Product has not been fully validated for medical applications. For research use only.**

Tel: 609-228-6898

Fax: 609-228-5909

E-mail: [tech@MedChemExpress.com](mailto:tech@MedChemExpress.com)

Address: 1 Deer Park Dr, Suite Q, Monmouth Junction, NJ 08852, USA