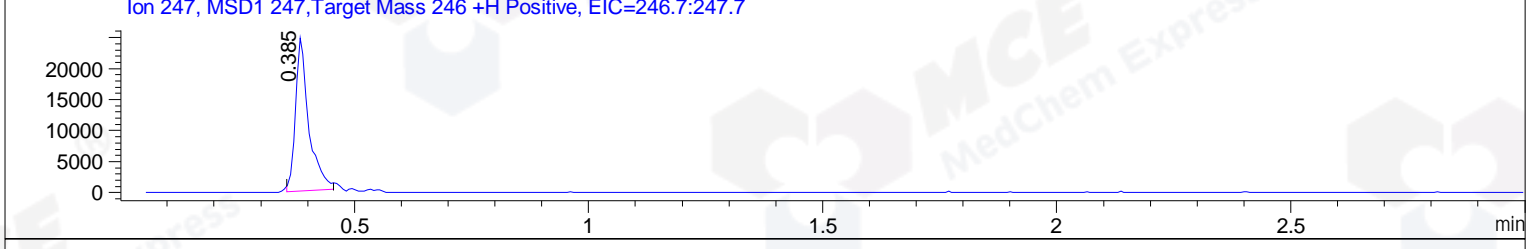
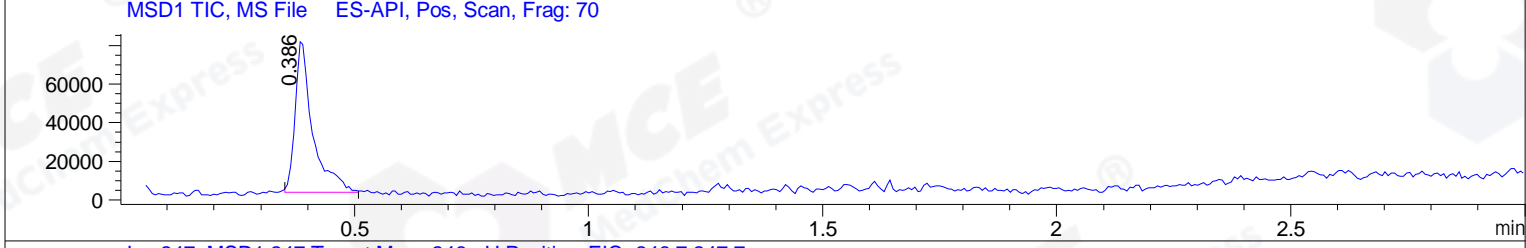
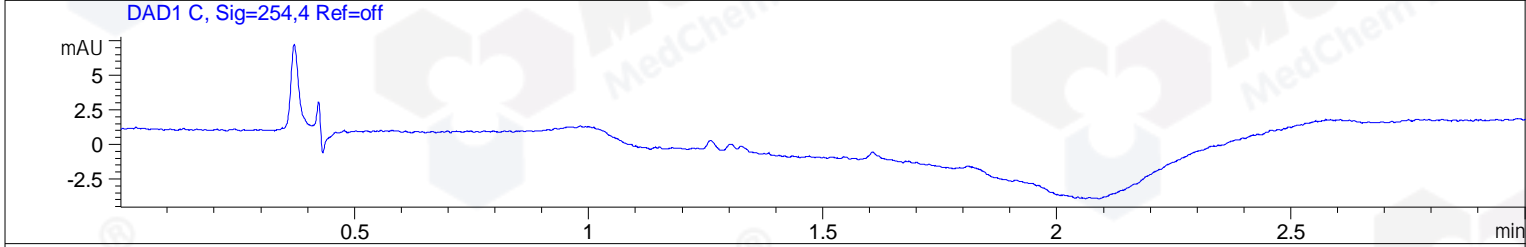
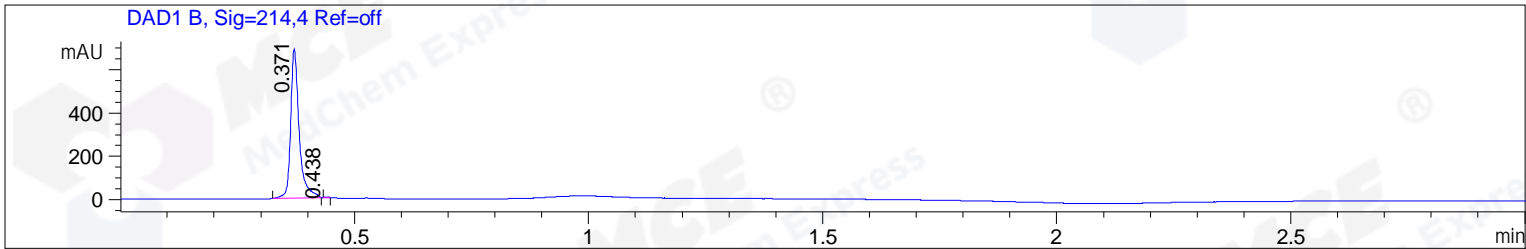


File ..\DATA\2019\20190319\558\BIZ2019-315-WYQ31.D Tgt Mass (CHM):  
 Injection Date : 19 Mar 19 1:12 pm +0800 Seq. Line : 48  
 Sample Name : BIZ2019-315-WYQ31 Location : P2-D-04  
 Acq. Operator : LQ\_1052 Inj : 1  
 Spec. Reported : MS Integration Inj Volume : 1 ul  
 Acq. Method : D:\Chem32\1\data\2019\20190319\558\1-POS-3MIN-1.M  
 Analysis Method : D:\CHEM32\1\DATA\2019\20190319\558\1-POS-3MIN-1.M  
 Catalog No : HY-113047 Batch# 39011-20190315  
 Method Info : Mobile Phase: A: water(0.01%TFA) B:ACN(0.01%TFA)  
 Gradient: 5% to 95%B within 1.3 min  
 Flow Rate :1.8ml/min  
 Column :SunFire C18, 4.6\*50mm,3.5um A-RP-314  
 Oven Temperature : 45



Integration Results for DAD1 B, Sig=214,4 Ref=off

| RetTim | Width | Area   | Height | Area% | MS (+) |
|--------|-------|--------|--------|-------|--------|
| 0.37   | 0.02  | 868.56 | 689.30 | 99.87 | 269    |
| 0.44   | 0.01  | 1.13   | 1.87   | 0.13  | 269    |

Integration Results for DAD1 C, Sig=254,4 Ref=off

| RetTim | Width | Area | Height | Area% | MS (+) |
|--------|-------|------|--------|-------|--------|
|--------|-------|------|--------|-------|--------|

Integration Results for MSD1 TIC, MS File

| RetTim | Width | Area      | Height   | Area%  | MS (+) |
|--------|-------|-----------|----------|--------|--------|
| 0.39   | 0.04  | 204120.23 | 80008.24 | 100.00 | 269    |

Ret. Time: 0.39

<<<< POSITIVE SPECTRA >>>>

ES-API Positive

