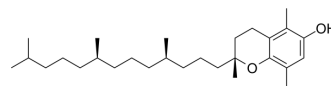


(rel)- β -Tocopherol

Cat. No.:	HY-113068
CAS No.:	148-03-8
Molecular Formula:	C ₂₈ H ₄₈ O ₂
Molecular Weight:	416.69
Target:	Tyrosinase
Pathway:	Metabolic Enzyme/Protease
Storage:	4°C, protect from light * In solvent : -80°C, 6 months; -20°C, 1 month (protect from light)



BIOLOGICAL ACTIVITY

Description	(rel)- β -Tocopherol is a relative configuration of β -Tocopherol. (\pm)- β -Tocopherol is a lipid-soluble form of vitamin E with antioxidant activity. β -Tocopherol can inhibit tyrosinase activity and melanin synthesis. β -Tocopherol also can prevent the inhibition of cell growth and of PKC activity caused by d-alpha-tocopherol ^[1] .
IC ₅₀ & Target	Human Endogenous Metabolite

REFERENCES

[1]. F. Bergel, et al. Studies on vitamin E. Part III. Observations on the structure of α - and β -tocopherol.

Caution: Product has not been fully validated for medical applications. For research use only.

Tel: 609-228-6898

Fax: 609-228-5909

E-mail: tech@MedChemExpress.com

Address: 1 Deer Park Dr, Suite Q, Monmouth Junction, NJ 08852, USA