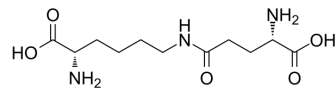


Epsilon-(gamma-glutamyl)-lysine

Cat. No.:	HY-113089
CAS No.:	17105-15-6
Molecular Formula:	C ₁₁ H ₂₁ N ₃ O ₅
Molecular Weight:	275.3
Target:	Others
Pathway:	Others
Storage:	Please store the product under the recommended conditions in the Certificate of Analysis.



BIOLOGICAL ACTIVITY

Description

Epsilon-(gamma-glutamyl)-lysine is an N(6)-acyl-L-lysine derivative. The enzyme tissue transglutaminase (tTg) helps the formation of epsilon-(gamma-glutamyl)lysine bonds between ECM components in some disease, such as non-diabetic kidney, glaucoma filtration^[1].

REFERENCES

- [1]. Siegfried G Priglinger, et al. Potential Role of Tissue Transglutaminase in Glaucoma Filtering Surgery. Invest Ophthalmol Vis Sci. 2006 Sep;47(9):3835-45.
- [2]. A M El Nahas, et al. Elevated Epsilon-(Gamma-Glutamyl)lysine in Human Diabetic Nephropathy Results From Increased Expression and Cellular Release of Tissue Transglutaminase. Nephron Clin Pract. 2004;97(3):c108-17.

Caution: Product has not been fully validated for medical applications. For research use only.

Tel: 609-228-6898

Fax: 609-228-5909

E-mail: tech@MedChemExpress.com

Address: 1 Deer Park Dr, Suite Q, Monmouth Junction, NJ 08852, USA