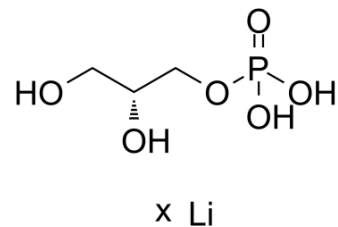


sn-Glycerol 3-phosphate lithium

| | | | |
|--------------------|--|-------|----------|
| Cat. No.: | HY-113128A | | |
| Molecular Formula: | C ₃ H ₉ O ₆ P.xLi | | |
| Target: | Endogenous Metabolite | | |
| Pathway: | Metabolic Enzyme/Protease | | |
| Storage: | Powder | -20°C | 3 years |
| | | 4°C | 2 years |
| | In solvent | -80°C | 6 months |
| | | -20°C | 1 month |



SOLVENT & SOLUBILITY

| | |
|----------|---|
| In Vitro | H ₂ O : 50 mg/mL (Need ultrasonic) |
|----------|---|

BIOLOGICAL ACTIVITY

| | |
|---------------------------|--|
| Description | sn-Glycerol 3-phosphate lithium is produced by cytosolic glycerol 3-phosphate dehydrogenase pathway through the reduction of dihydroxyacetone phosphate using NADH formed during glycolysis. |
| IC ₅₀ & Target | Human Endogenous Metabolite |

Caution: Product has not been fully validated for medical applications. For research use only.

Tel: 609-228-6898

Fax: 609-228-5909

E-mail: tech@MedChemExpress.com

Address: 1 Deer Park Dr, Suite Q, Monmouth Junction, NJ 08852, USA