

sn-Glycerol 3-phosphate (lithium)

Cat. No.: HY-113128A

Batch No.: 128974

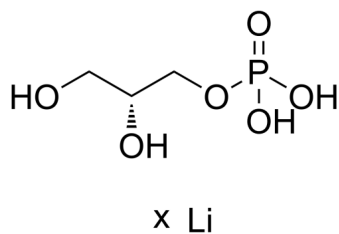
Molecular Formula: C₃H₉O₆P.xLi

ANALYTICAL DATA

Theoretical: C(19.48%)、H(4.36%)、N(-)

Result: C(18.83 %)、H(3.82 %)、N(-)

Chemical Structure:



Caution: Product has not been fully validated for medical applications. For research use only.

Tel: 609-228-6898

Fax: 609-228-5909

E-mail: tech@MedChemExpress.com

Address: 1 Deer Park Dr, Suite Q, Monmouth Junction, NJ 08852, USA