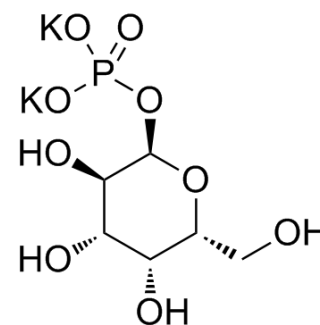


Galactose 1-phosphate Potassium salt

Cat. No.:	HY-113143A		
CAS No.:	19046-60-7		
Molecular Formula:	C ₆ H ₁₁ K ₂ O ₉ P		
Molecular Weight:	336.32		
Target:	Endogenous Metabolite		
Pathway:	Metabolic Enzyme/Protease		
Storage:	Powder	-20°C	3 years
	In solvent	-80°C	6 months
		-20°C	1 month



SOLVENT & SOLUBILITY

In Vitro

H₂O : 125 mg/mL (371.67 mM; Need ultrasonic)

Concentration	Solvent	Mass		
		1 mg	5 mg	10 mg
Preparing Stock Solutions	1 mM	2.9734 mL	14.8668 mL	29.7336 mL
	5 mM	0.5947 mL	2.9734 mL	5.9467 mL
	10 mM	0.2973 mL	1.4867 mL	2.9734 mL

Please refer to the solubility information to select the appropriate solvent.

BIOLOGICAL ACTIVITY

Description

Galactose 1-phosphate Potassium salt is an intermediate in the galactose metabolism and nucleotide sugars.

REFERENCES

[1]. metabolism pathways McCorvie TJ, et al. The structural and molecular biology of type I galactosemia: Enzymology of galactose 1-phosphate uridylyltransferase. IUBMB Life. 2011 Sep;63(9):694-700.

Caution: Product has not been fully validated for medical applications. For research use only.

Tel: 609-228-6898

Fax: 609-228-5909

E-mail: tech@MedChemExpress.com

Address: 1 Deer Park Dr, Suite Q, Monmouth Junction, NJ 08852, USA