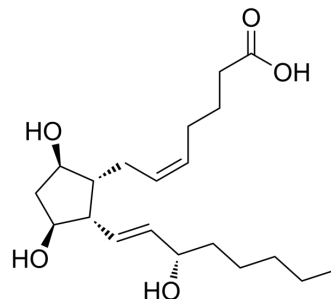


## ent-8-Iso-15(S)-prostaglandin F2 $\alpha$

Cat. No.:	HY-113209A
CAS No.:	214748-66-0
Molecular Formula:	C <sub>20</sub> H <sub>34</sub> O <sub>5</sub>
Molecular Weight:	354.48
Target:	Endogenous Metabolite
Pathway:	Metabolic Enzyme/Protease
Storage:	Please store the product under the recommended conditions in the Certificate of Analysis.



### BIOLOGICAL ACTIVITY

#### Description

Ent-8-Iso-15(S)-prostaglandin F2 $\alpha$  is an isomer of 8-Isoprostaglandin F2 $\alpha$ , with a better inhibiting activity in the whole blood platelet aggregation inhibition assay<sup>[1]</sup>.

### REFERENCES

[1]. Manami S, et al. Selective Synthesis of ent-15-epi-F 2t -Isoprostane and a Deuterated Derivative, Synthesis 2007(15): 2397-2403.

**Caution: Product has not been fully validated for medical applications. For research use only.**

Tel: 609-228-6898

Fax: 609-228-5909

E-mail: tech@MedChemExpress.com

Address: 1 Deer Park Dr, Suite Q, Monmouth Junction, NJ 08852, USA