

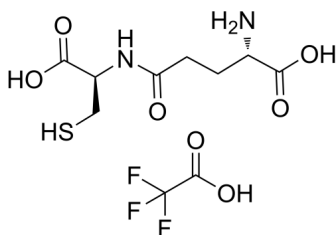
## Gamma-glutamylcysteine (TFA)

Cat. No.: HY-113402A  
Batch No.: 285883  
CAS No.: 283159-88-6  
Molecular Formula: C<sub>10</sub>H<sub>15</sub>F<sub>3</sub>N<sub>2</sub>O<sub>7</sub>S

### ANALYTICAL DATA

Theoretical: C(-), H(-), N(-), Peptide Content(≥60.0%)  
Result: C(32.83%), H(4.85%), N(8.02%), Peptide Content(71.70%)

Chemical Structure:



**Caution: Product has not been fully validated for medical applications. For research use only.**

Tel: 609-228-6898

Fax: 609-228-5909

E-mail: [tech@MedChemExpress.com](mailto:tech@MedChemExpress.com)

Address: 1 Deer Park Dr, Suite Q, Monmouth Junction, NJ 08852, USA