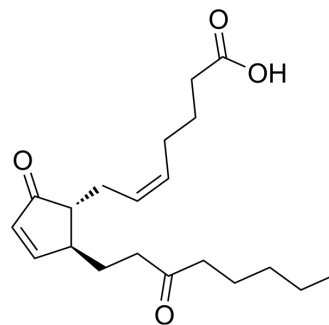


13,14-Dihydro-15-keto-prostaglandin A2

Cat. No.:	HY-113461
CAS No.:	74872-89-2
Molecular Formula:	C ₂₀ H ₃₀ O ₄
Molecular Weight:	334.45
Target:	Others
Pathway:	Others
Storage:	Please store the product under the recommended conditions in the Certificate of Analysis.



BIOLOGICAL ACTIVITY

Description

13,14-Dihydro-15-keto-prostaglandin A2 is a product of the non-enzymatic dehydration of 13,14-dihydro-15-keto PGE2. It is further broken down into bicyclo PGE2, which acts as a biomarker for PGE2 synthesis^[1].

REFERENCES

[1]. F A Fitzpatrick, et al. The stability of 13,14-dihydro-15 keto-PGE2. Prostaglandins. 1980 Jun;19(6):917-31.

Caution: Product has not been fully validated for medical applications. For research use only.

Tel: 609-228-6898

Fax: 609-228-5909

E-mail: tech@MedChemExpress.com

Address: 1 Deer Park Dr, Suite Q, Monmouth Junction, NJ 08852, USA