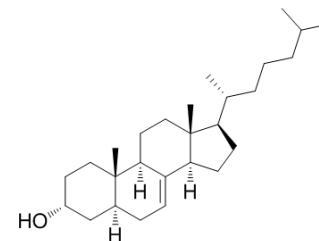


Lathosterol

Cat. No.:	HY-113486		
CAS No.:	80-99-9		
Molecular Formula:	C ₂₇ H ₄₆ O		
Molecular Weight:	386.65		
Target:	Endogenous Metabolite		
Pathway:	Metabolic Enzyme/Protease		
Storage:	Powder	-20°C	3 years
	In solvent	-80°C	6 months
		-20°C	1 month



BIOLOGICAL ACTIVITY

Description	Lathosterol is a cholesterol-like molecule. Serum Lathosterol concentration is an indicator of whole-body cholesterol synthesis.
IC ₅₀ & Target	Human Endogenous Metabolite

REFERENCES

[1]. Kempen HJ, et al. Serum Lathosterol concentration is an indicator of whole-body cholesterol synthesis in humans. *J Lipid Res.* 1988 Sep;29(9):1149-55.

Caution: Product has not been fully validated for medical applications. For research use only.

Tel: 609-228-6898

Fax: 609-228-5909

E-mail: tech@MedChemExpress.com

Address: 1 Deer Park Dr, Suite Q, Monmouth Junction, NJ 08852, USA