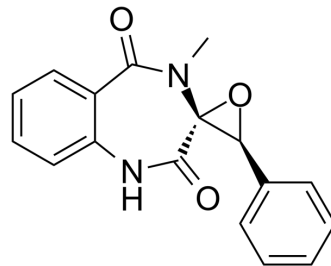


(-)-Cyclopinin

Cat. No.:	HY-113626
CAS No.:	20007-87-8
Molecular Formula:	C ₁₇ H ₁₄ N ₂ O ₃
Molecular Weight:	294.3
Target:	AChE
Pathway:	Neuronal Signaling
Storage:	Please store the product under the recommended conditions in the Certificate of Analysis.



BIOLOGICAL ACTIVITY

Description

(-)-Cyclopinin ((-)-Cyclopinine) is the enantiomer of Cyclopinin. Cyclopinin is a selective acetylcholinesterase (AChE) inhibitor with the IC₅₀ of 2.04 μM^[1].

REFERENCES

[1]. F Kuno, et al. Arisugacins A and B, novel and selective acetylcholinesterase inhibitors from *Penicillium* sp. FO-4259. II. Structure elucidation. *J Antibiot* (Tokyo). 1996 Aug;49(8):748-51.

Caution: Product has not been fully validated for medical applications. For research use only.

Tel: 609-228-6898

Fax: 609-228-5909

E-mail: tech@MedChemExpress.com

Address: 1 Deer Park Dr, Suite Q, Monmouth Junction, NJ 08852, USA