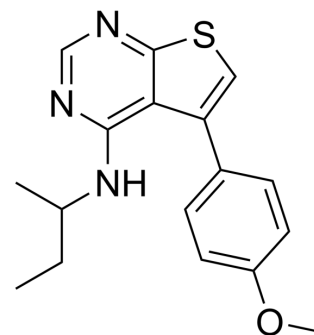


KY1022

| | |
|--------------------|---|
| Cat. No.: | HY-113680 |
| CAS No.: | 1029721-36-5 |
| Molecular Formula: | C ₁₇ H ₁₉ N ₃ OS |
| Molecular Weight: | 313.42 |
| Target: | Apoptosis; Ras; β-catenin; Wnt |
| Pathway: | Apoptosis; GPCR/G Protein; Stem Cell/Wnt |
| Storage: | Please store the product under the recommended conditions in the Certificate of Analysis. |



BIOLOGICAL ACTIVITY

Description

KY1022 is a small molecule destabilizing Ras via targeting the Wnt/β-catenin pathway. KY1022 can inhibit cellular EMT, metastasis and apoptosis. KY1022 can be used for the research of metastatic colorectal cancer^[1].

REFERENCES

[1]. Cho YH, et al. KY1022, a small molecule destabilizing Ras via targeting the Wnt/β-catenin pathway, inhibits development of metastatic colorectal cancer. *Oncotarget*. 2016 Dec 6;7(49):81727-81740.

Caution: Product has not been fully validated for medical applications. For research use only.

Tel: 609-228-6898

Fax: 609-228-5909

E-mail: tech@MedChemExpress.com

Address: 1 Deer Park Dr, Suite Q, Monmouth Junction, NJ 08852, USA