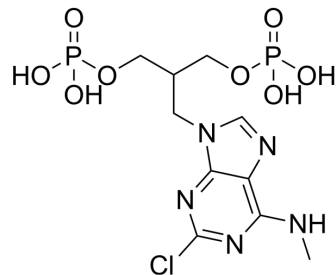


MRS2298

Cat. No.:	HY-113723
CAS No.:	491611-43-9
Molecular Formula:	C ₁₀ H ₁₆ ClN ₅ O ₈ P ₂
Molecular Weight:	431.66
Target:	P2Y Receptor
Pathway:	GPCR/G Protein
Storage:	Please store the product under the recommended conditions in the Certificate of Analysis.



BIOLOGICAL ACTIVITY

Description

MRS2298 is a potent acyclic P2Y₁ receptor antagonist with a K_i of 29.6 nM. MRS2298 inhibits the ADP-induced aggregation of human platelets with an IC₅₀ of 62.8 nM. MRS2298 inhibits Ca²⁺ rise in platelets with an IC₅₀ of 810 nM^[1].

REFERENCES

[1]. Marco Cattaneo, et al. Antiaggregatory activity in human platelets of potent antagonists of the P2Y₁ receptor. *Biochem Pharmacol.* 2004 Nov 15;68(10):1995-2002.

Caution: Product has not been fully validated for medical applications. For research use only.

Tel: 609-228-6898

Fax: 609-228-5909

E-mail: tech@MedChemExpress.com

Address: 1 Deer Park Dr, Suite Q, Monmouth Junction, NJ 08852, USA