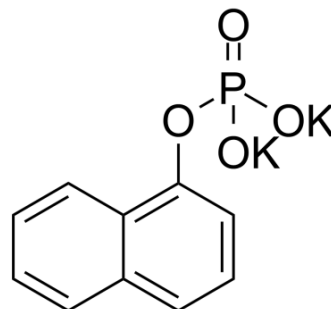


1-Naphthyl phosphate potassium salt

Cat. No.:	HY-113821
CAS No.:	100929-85-9
Molecular Formula:	C ₁₀ H ₇ K ₂ O ₄ P
Molecular Weight:	300.33
Target:	Phosphatase
Pathway:	Metabolic Enzyme/Protease
Storage:	Please store the product under the recommended conditions in the Certificate of Analysis.



BIOLOGICAL ACTIVITY

Description	1-Naphthyl phosphate potassium salt is a non-specific phosphatase inhibitor. 1-Naphthyl phosphate potassium salt decreases the splice-correcting effect ^[1] .
In Vitro	The splice-correcting effect obtained with NickFect1 (NF1) and NickFect2 (NF2) decreases about 50% in the presence of 1-Naphthyl phosphate potassium salt (N7000), whereas PF3 does not respond to the treatment with phosphatase inhibitor. In the presence of 1-Naphthyl phosphate potassium salt the complexes of ON with NF1/2 has less regular shape and lower packing density ^[1] . MCE has not independently confirmed the accuracy of these methods. They are for reference only.

REFERENCES

[1]. Nikita Oskolkov, et al. NickFects, Phosphorylated Derivatives of Transportan 10 for Cellular Delivery of Oligonucleotides. International Journal of Peptide Research and Therapeutics volume 17, Article number: 147 (2011).

Caution: Product has not been fully validated for medical applications. For research use only.

Tel: 609-228-6898

Fax: 609-228-5909

E-mail: tech@MedChemExpress.com

Address: 1 Deer Park Dr, Suite Q, Monmouth Junction, NJ 08852, USA