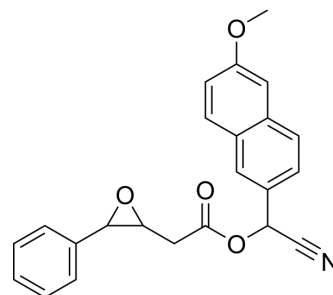


PHOME

Cat. No.:	HY-113862		
CAS No.:	1028430-42-3		
Molecular Formula:	C ₂₃ H ₁₉ NO ₄		
Molecular Weight:	373.4		
Target:	Fluorescent Dye		
Pathway:	Others		
Storage:	Powder	-20°C	3 years
	In solvent	-80°C	6 months
		-20°C	1 month



SOLVENT & SOLUBILITY

In Vitro

DMSO : ≥ 10 mg/mL (26.78 mM)
 DMF : ≥ 10 mg/mL (26.78 mM)
 * "≥" means soluble, but saturation unknown.

	Solvent Concentration	Mass	1 mg	5 mg	10 mg
Preparing Stock Solutions	1 mM		2.6781 mL	13.3905 mL	26.7809 mL
	5 mM		0.5356 mL	2.6781 mL	5.3562 mL
	10 mM		0.2678 mL	1.3390 mL	2.6781 mL

Please refer to the solubility information to select the appropriate solvent.

BIOLOGICAL ACTIVITY

Description

PHOME is a fluorogenic substrate for sEH. sEH can hydrolyze the epoxy ring in the PHOME substrate. PHOME can be used for fluorescent epoxide hydrolase assay (extracted from patent CN113402447A)^[1].

REFERENCES

[1]. Chen, Guoliang, et al. sEH inhibitor or pharmaceutically acceptable composition thereof, and preparation method and application thereof.

Caution: Product has not been fully validated for medical applications. For research use only.

Tel: 609-228-6898

Fax: 609-228-5909

E-mail: tech@MedChemExpress.com

Address: 1 Deer Park Dr, Suite Q, Monmouth Junction, NJ 08852, USA