

## PLX5622

---

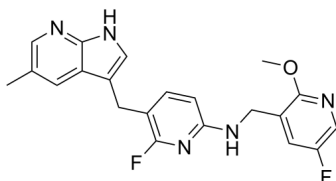
Cat. No.: HY-114153  
Batch No.: 233326  
CAS No.: 1303420-67-8  
Molecular Formula: C<sub>21</sub>H<sub>19</sub>F<sub>2</sub>N<sub>5</sub>O

### ANALYTICAL DATA

Theoretical: C(63.79%), H(4.84%), N(17.71%)

Result: C(63.79%), H(4.73%), N(17.55%)

Chemical Structure:



**Caution: Product has not been fully validated for medical applications. For research use only.**

Tel: 609-228-6898

Fax: 609-228-5909

E-mail: [tech@MedChemExpress.com](mailto:tech@MedChemExpress.com)

Address: 1 Deer Park Dr, Suite Q, Monmouth Junction, NJ 08852, USA