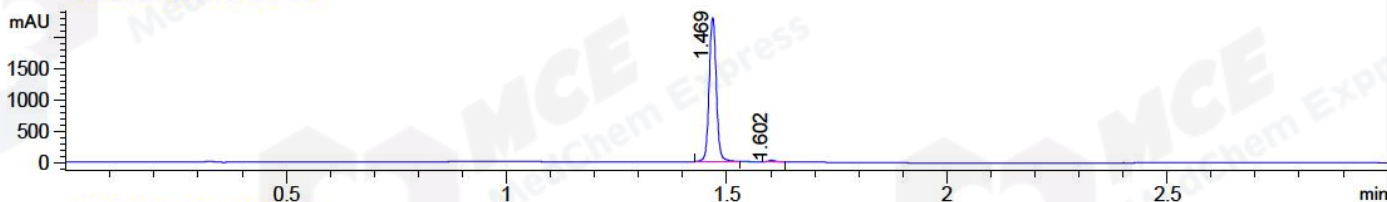


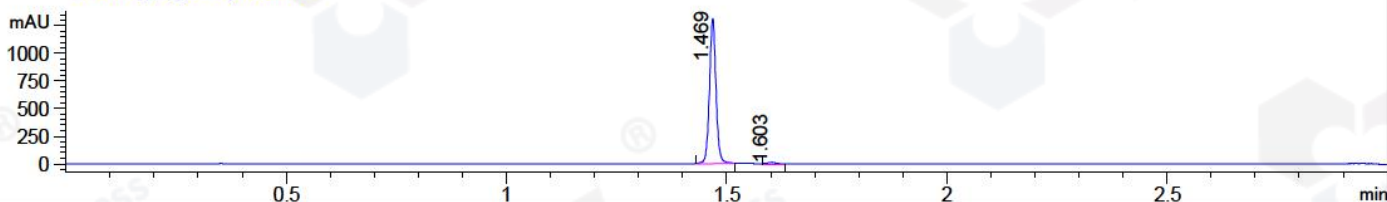
File ..1\DATA\2018\20181203\506\BIZ2018-D03-CXL1.D Tgt Mass (CHM):

Injection Date : 3 Dec 18 5:30 pm +0800 Seq. Line : 13
 Sample Name : BIZ2018-D03-CXL1 Location : P2-E-01
 Acq. Operator : LQ_1052 Inj : 1
 Spec. Reported : MS Integration Inj Volume : 1 ul
 Acq. Method : D:\Chem32\1\data\2018\20181203\506\1-POS-3MIN-1.M
 Analysis Method : D:\CHEM32\1\DATA\2018\20181203\506\1-POS-3MIN-1.M
 Catalog No : HY-114166 Batch#34870 A-RP-314
 Method Info : Mobile Phase: A: water(0.01%TFA) B:ACN(0.01%TFA)
 Gradient: 5% to 95%B within 1.3 min
 Flow Rate :1.8ml/min
 Column :SunFire C18, 4.6*50mm,3.5um A-RP-314
 Oven Temperature : 45□

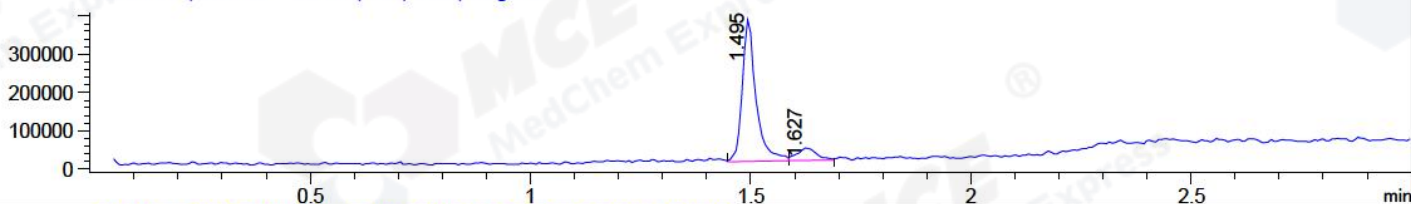
DAD1 B, Sig=214,4 Ref=off



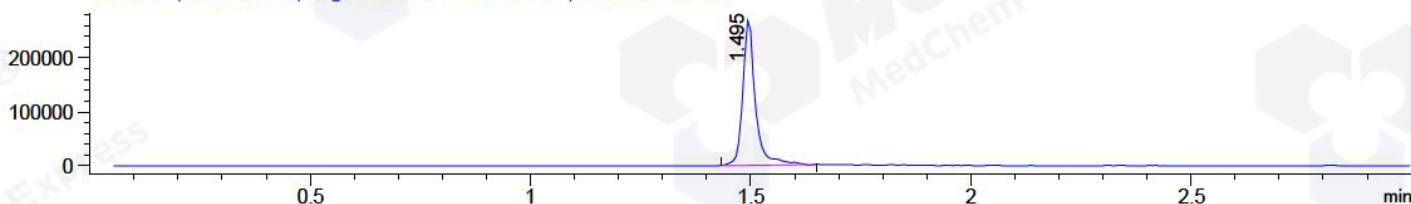
DAD1 C, Sig=254,4 Ref=off



MSD1 TIC, MS File ES-API, Pos, Scan, Frag: 70



Ion 271.1, MSD1 271.1, Target Mass 270.1 +H Positive, EIC=270.8:271.8



Integration Results for DAD1 B, Sig=214,4 Ref=off

RetTim	Width	Area	Height	Area%	MS (+)
1.47	0.02	2631.86	2306.31	99.04	271
1.60	0.02	25.45	24.71	0.96	285

Integration Results for DAD1 C, Sig=254,4 Ref=off

RetTim	Width	Area	Height	Area%	MS (+)
1.47	0.02	1357.75	1311.71	99.09	271
1.60	0.02	12.49	11.89	0.91	285

Integration Results for MSD1 TIC, MS File

RetTim	Width	Area	Height	Area%	MS (+)
1.49	0.03	808515.38	373724.16	88.71	271
1.63	0.04	102871.17	32851.26	11.29	285

Ret. Time: 1.49

<<<< POSITIVE SPECTRA >>>>

ES-API Positive



Ret. Time: 1.63

ES-API Positive

