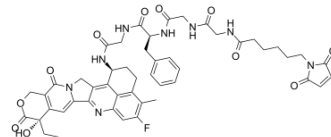


MC-GGFG-DX8951

Cat. No.:	HY-114233
CAS No.:	1600418-29-8
Molecular Formula:	C ₄₉ H ₅₁ FN ₈ O ₁₁
Molecular Weight:	946.97
Target:	Drug-Linker Conjugates for ADC
Pathway:	Antibody-drug Conjugate/ADC Related
Storage:	Please store the product under the recommended conditions in the COA.



BIOLOGICAL ACTIVITY

Description

MC-GGFG-DX8951 is a DX8951 with MC-GGFG linker. MC-GGFG-DX8951 can be used to develop DX8951 antibody conjugate (ADC), which is cleaved by lysosomal enzymes following ADC internalization into tumor tissue^[1].

REFERENCES

[1]. Nakada T, et al. Novel antibody drug conjugates containing exatecan derivative-based cytotoxic payloads. *Bioorg Med Chem Lett*. 2016 Mar 15;26(6):1542-1545.

Caution: Product has not been fully validated for medical applications. For research use only.

Tel: 609-228-6898

Fax: 609-228-5909

E-mail: tech@MedChemExpress.com

Address: 1 Deer Park Dr, Suite Q, Monmouth Junction, NJ 08852, USA