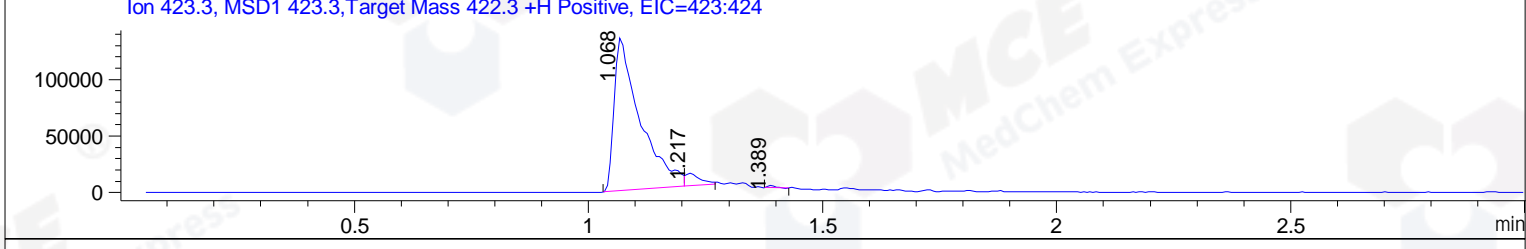
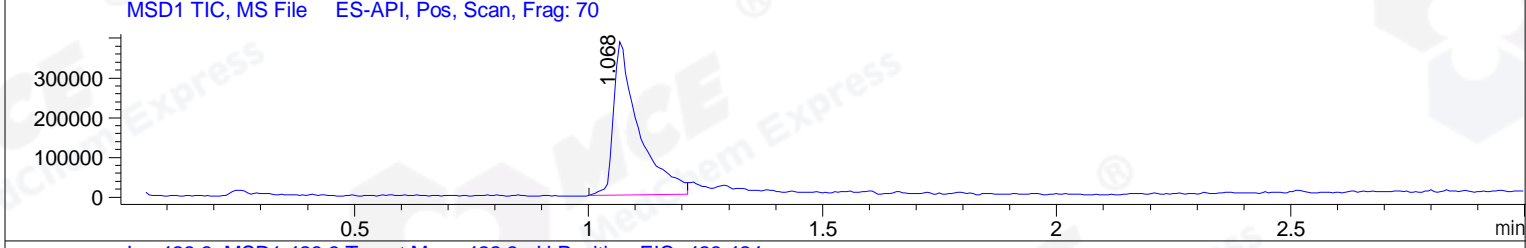
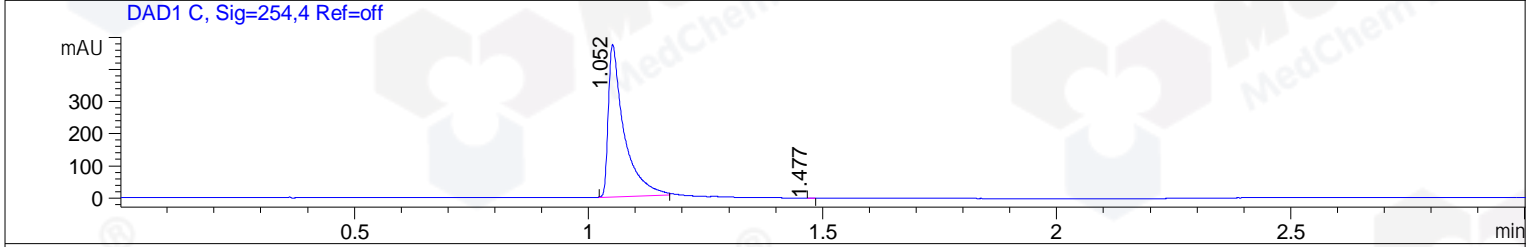
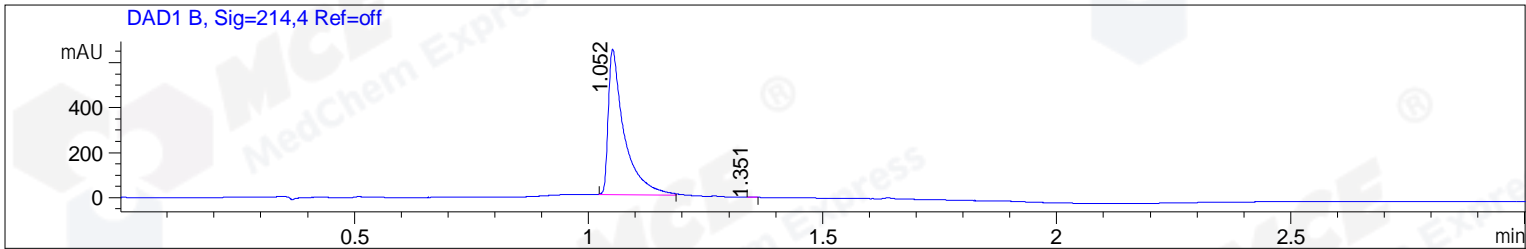


File ..1\DATA\2019\20190313\556\BIZ2019-312-CXL8.D Tgt Mass (CHM):
 Injection Date : 13 Mar 19 11:07 am +0800 Seq. Line : 24
 Sample Name : BIZ2019-312-CXL8 Location : P2-F-05
 Acq. Operator : LQ_1052 Inj : 1
 Spec. Reported : MS Integration Inj Volume : 1 ul
 Acq. Method : D:\Chem32\1\data\2019\20190313\556\1-POS-3MIN-1.M
 Analysis Method : D:\CHEM32\1\DATA\2019\20190313\556\1-POS-3MIN-1.M
 Catalog No : HY-114244 Batch# 38895
 Method Info : Mobile Phase: A: water(0.01%TFA) B:ACN(0.01%TFA)
 Gradient: 5% to 95%B within 1.3 min
 Flow Rate :1.8ml/min
 Column :SunFire C18, 4.6*50mm,3.5um A-RP-314
 Oven Temperature : 45



Integration Results for DAD1 B, Sig=214,4 Ref=off

RetTim	Width	Area	Height	Area%	MS (+)
1.05	0.03	1529.51	647.82	99.97	212
1.35	0.01	0.50	0.67	0.03	423

Integration Results for DAD1 C, Sig=254,4 Ref=off

RetTim	Width	Area	Height	Area%	MS (+)
1.05	0.03	1113.76	475.68	100.00	212
1.48	0.01	0.03	0.07	0.00	423

Integration Results for MSD1 TIC, MS File

RetTim	Width	Area	Height	Area%	MS (+)
1.07	0.05	1451501.13	389723.69	100.00	212

Ret. Time: 1.07

<<<< POSITIVE SPECTRA >>>>

ES-API Positive

