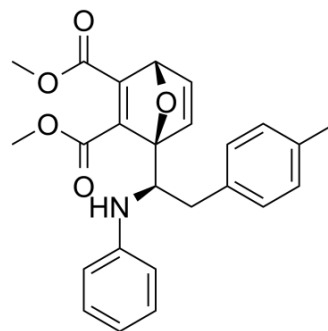


## COH000

|                    |   |       |          |
|--------------------|---|-------|----------|
| Cat. No.:          | HY-114304                                       |       |          |
| CAS No.:           | 1534358-79-6                                    |       |          |
| Molecular Formula: | C <sub>25</sub> H <sub>25</sub> NO <sub>5</sub> |       |          |
| Molecular Weight:  | 419.47  |       |          |
| Target:            | E1/E2/E3 Enzyme                                 |       |          |
| Pathway:           | Metabolic Enzyme/Protease                       |       |          |
| Storage:           | Powder  | -20°C | 3 years  |
|                    |   | 4°C   | 2 years  |
|                    | In solvent                                      | -80°C | 6 months |
|                    |   | -20°C | 1 month  |



### SOLVENT & SOLUBILITY

#### In Vitro

DMSO : 35.71 mg/mL (85.13 mM; Need ultrasonic)  
 H<sub>2</sub>O : < 0.1 mg/mL (insoluble)

| Preparing Stock Solutions | Solvent       | Mass | 1 mg      | 5 mg       | 10 mg      |
|---------------------------|---------------|------|-----------|------------|------------|
|                           | Concentration |      |           |            |            |
|                           | 1 mM          |      | 2.3840 mL | 11.9198 mL | 23.8396 mL |
|                           | 5 mM          |      | 0.4768 mL | 2.3840 mL  | 4.7679 mL  |
|                           | 10 mM         |      | 0.2384 mL | 1.1920 mL  | 2.3840 mL  |

Please refer to the solubility information to select the appropriate solvent.

### BIOLOGICAL ACTIVITY

#### Description

COH000 is an allosteric, covalent and irreversible inhibitor of ubiquitin-like 1-activating enzyme (SUMO-activating enzyme) (E1), with an IC<sub>50</sub> of 0.2 μM for SUMOylation in vitro<sup>[1]</sup>.

#### IC<sub>50</sub> & Target

IC<sub>50</sub>: 0.2 μM (SUMO-activating enzyme)<sup>[1]</sup>.

#### In Vitro

COH000 has over 500-fold selectivity for SUMOylation than ubiquitylation. COH000 inhibits SUMO adenylation without directly competing with ATP or SUMO1 binding. COH000 has an extremely slow off-rate and is consistent with it being covalently bound to the enzyme<sup>[1]</sup>.

### REFERENCES

**Caution: Product has not been fully validated for medical applications. For research use only.**

Tel: 609-228-6898

Fax: 609-228-5909

E-mail: [tech@MedChemExpress.com](mailto:tech@MedChemExpress.com)

Address: 1 Deer Park Dr, Suite Q, Monmouth Junction, NJ 08852, USA