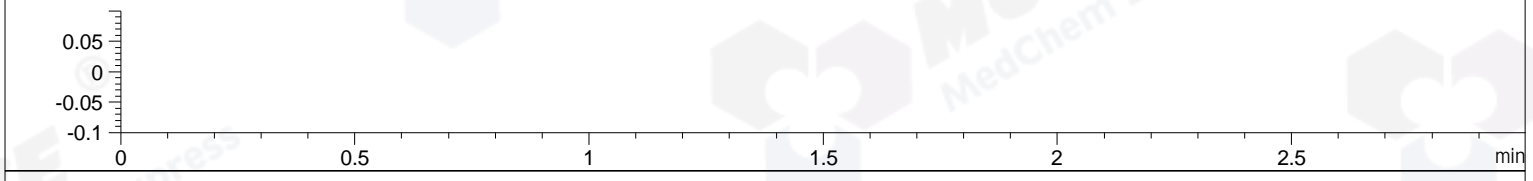
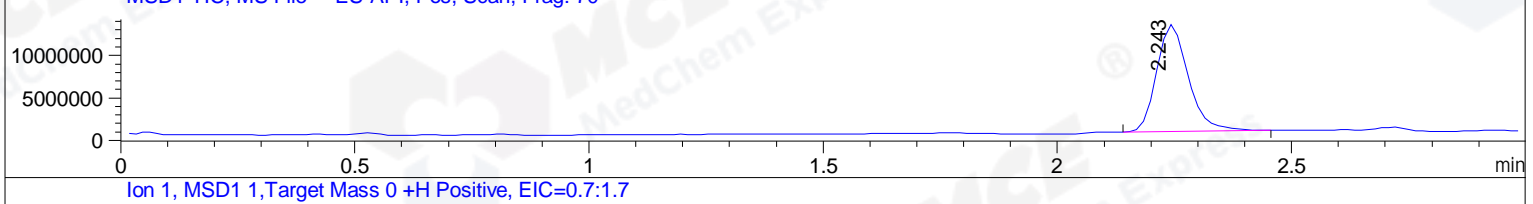
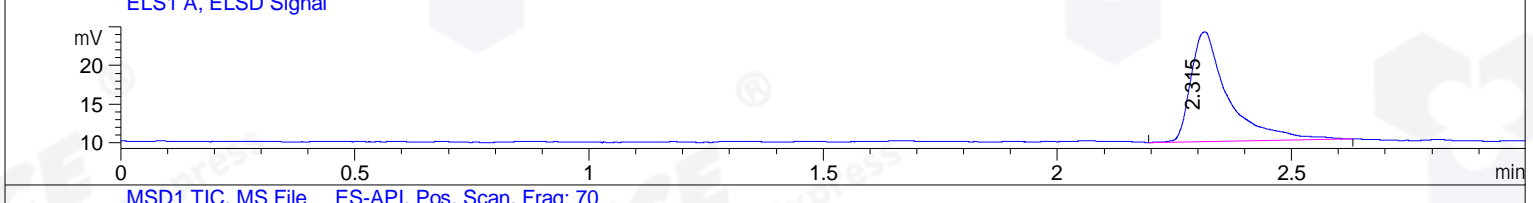
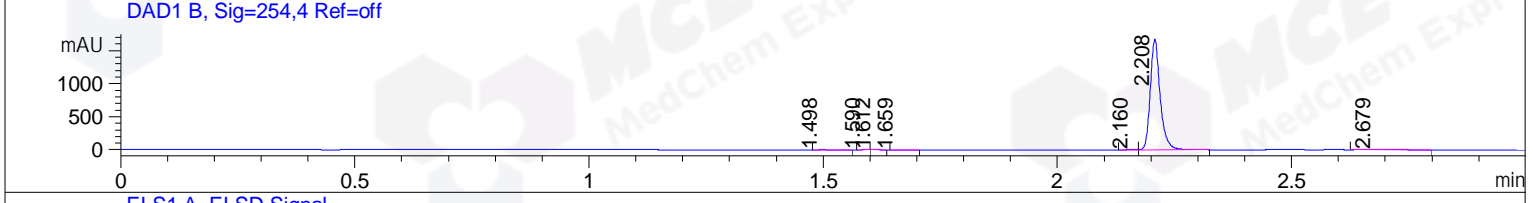
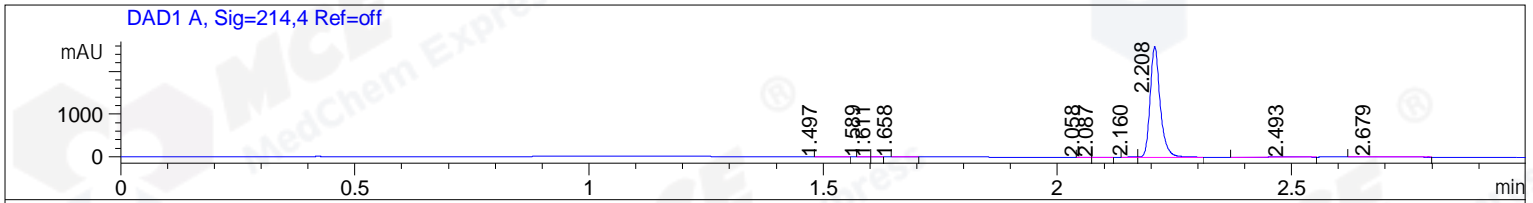


File ..MS03\Data\20190515\20190515\XLJ6621-030-3.D Tgt Mass (CHM):
 Injection Date : 15 May 19 12:50 pm +0800 Seq. Line : 47
 Sample Name : XLJ6621-030-3 Location : P1-E-02
 Acq. Operator : SYSTEM Inj : 1
 Spec. Reported : MS Integration Inj Volume : 1 ul
 Acq. Method : D:\LCMS03\Data\20190515\20190515\1-POS-3MIN(0-1500).M
 Analysis Method : D:\LCMS03\Data\20190515\20190515\1-POS-3MIN(0-1500).M
 Catalog No : HY-114305 Batch#41079
 Method Info : Mobile Phase: A: water(0.01%TFA) B:ACN(0.01%TFA)
 Gradient: 5% to 95%B within 1.3 min
 Flow Rate :1.8ml/min
 Column :SunFire C18, 4.6*50mm,3.5um A-RP-392
 Oven Temperature : 45C



Integration Results for DAD1 A, Sig=214,4 Ref=off

RetTim	Width	Area	Height	Area%	MS (+)
1.50	0.02	2.60	2.26	0.07	83
1.59	0.01	1.20	1.38	0.03	83
1.61	0.01	1.14	1.43	0.03	83
1.66	0.02	1.38	1.13	0.04	83
2.06	0.02	2.59	2.80	0.07	83
2.09	0.02	2.75	2.41	0.07	83
2.16	0.02	9.35	7.12	0.24	83
2.21	0.02	3862.55	2596.01	98.38	1174
2.49	0.05	4.42	1.03	0.11	83
2.68	0.04	38.32	14.58	0.98	83

Integration Results for DAD1 B, Sig=254,4 Ref=off

RetTim	Width	Area	Height	Area%	MS (+)
1.50	0.02	3.41	2.95	0.14	83
1.59	0.01	1.41	1.58	0.06	83
1.61	0.01	1.70	2.09	0.07	83
1.66	0.02	1.77	1.48	0.07	83

2.16	0.02	7.91	5.60	0.32	83
2.21	0.02	2451.91	1672.63	98.72	1174
2.68	0.04	15.66	5.97	0.63	83

Integration Results for ELS1 A, ELSD Signal

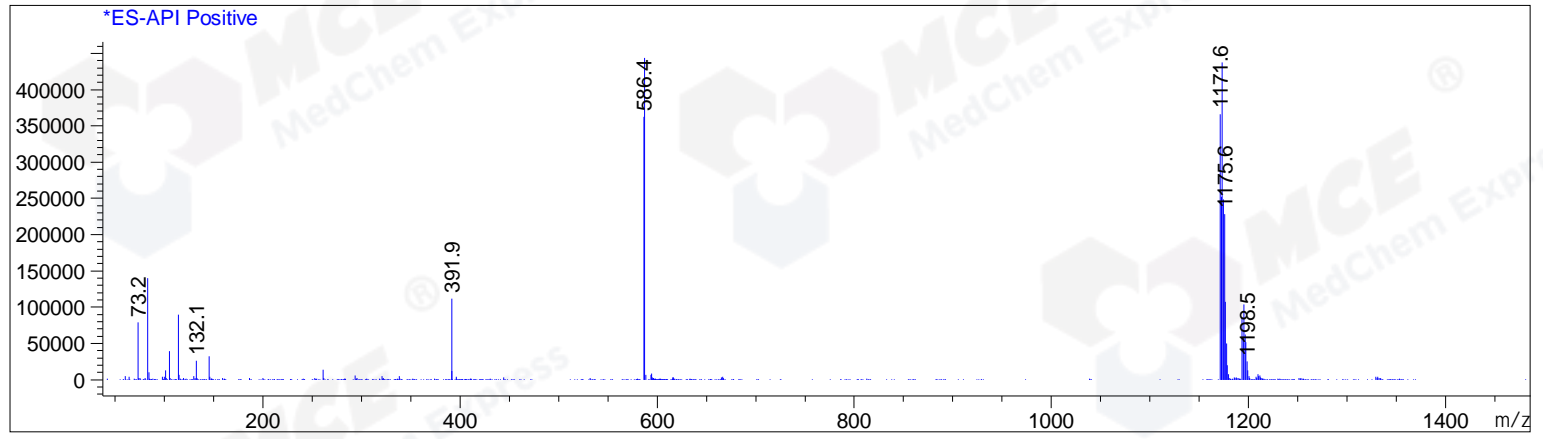
RetTim	Width	Area	Height	Area%	MS (+)
2.31	0.08	79.18	14.20	100.00	587

Integration Results for MSD1 TIC, MS File

RetTim	Width	Area	Height	Area%	MS (+)
2.24	0.08	59354284.00	12599736.00	100.00	587

Ret. Time: 2.24

<<<< POSITIVE SPECTRA >>>>



*** End of Report ***