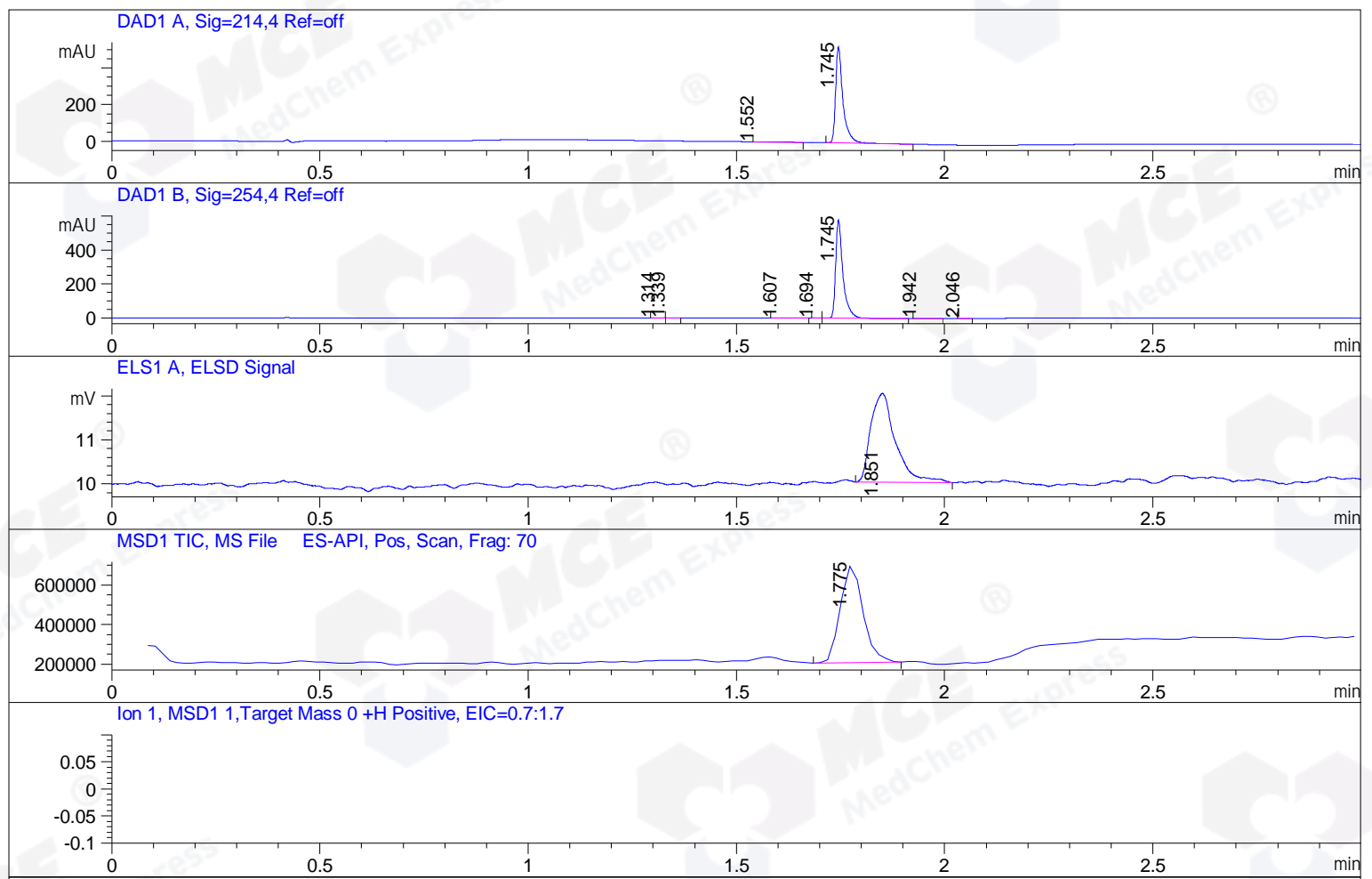


File ..\Data\20190715\20190715\BIZ2019-715-CXL10.D Tgt Mass (CHM):
 Injection Date : 15 Jul 19 5:34 pm +0800 Seq. Line : 93
 Sample Name : BIZ2019-715-CXL10 Location : P2-F-01
 Acq. Operator : SYSTEM Inj : 1
 Spec. Reported : MS Integration Inj Volume : 1 ul
 Acq. Method : D:\LCMS03\Data\20190715\20190715\1-POS-3MIN.M
 Analysis Method : D:\LCMS03\Data\20190715\20190715\1-POS-3MIN.M
 Catalog No : HY-114361 Batch#43513
 Method Info : Mobile Phase: A: water(0.01%TFA) B:ACN(0.01%TFA)
 Gradient: 5% to 95%B within 1.3 min
 Flow Rate :1.8ml/min
 Column :SunFire C18, 4.6*50mm,3.5um A-RP-446
 Oven Temperature : 45C



Integration Results for DAD1 A, Sig=214,4 Ref=off

RetTim	Width	Area	Height	Area%	MS (+)
1.55	0.02	1.14	0.72	0.18	145
1.74	0.02	638.64	521.02	99.82	604

Integration Results for DAD1 B, Sig=254,4 Ref=off

RetTim	Width	Area	Height	Area%	MS (+)
1.31	0.02	0.51	0.51	0.07	145
1.34	0.01	0.27	0.31	0.04	145
1.61	0.03	0.94	0.49	0.13	145
1.69	0.01	0.07	0.09	0.01	145
1.74	0.02	704.19	578.62	99.62	604
1.94	0.02	0.49	0.38	0.07	145
2.05	0.02	0.41	0.39	0.06	145

Integration Results for ELS1 A, ELSD Signal

RetTim	Width	Area	Height	Area%	MS (+)
--------	-------	------	--------	-------	--------

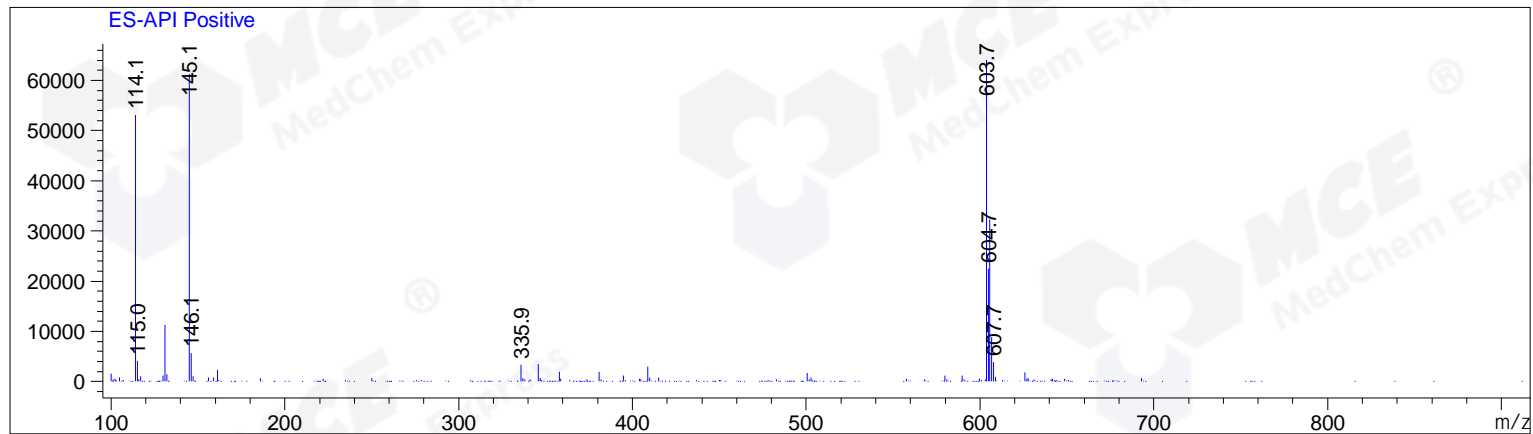
1.85 0.06 8.33 2.02 100.00 145

Integration Results for MSD1 TIC, MS File

RetTim	Width	Area	Height	Area%	MS (+)
1.78	0.06	1869988.88	490857.16	100.00	604

Ret. Time: 1.78

<<<< POSITIVE SPECTRA >>>>



*** End of Report ***