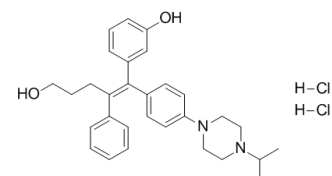


ERR γ Inverse Agonist 1

Cat. No.:	HY-114411
Molecular Formula:	C ₃₀ H ₃₈ Cl ₂ N ₂ O ₂
Molecular Weight:	529.54
Target:	Estrogen Receptor/ERR
Pathway:	Others
Storage:	Please store the product under the recommended conditions in the COA.



BIOLOGICAL ACTIVITY

Description	ERR γ Inverse Agonist 1 (Compound 12) is a potent, selective and orally bioavailable Estrogen-related Receptor grammar (ERRγ) inverse agonist, with an IC ₅₀ of 40 nM ^[1] .		
IC ₅₀ & Target	ERR γ 0.040 μ M (IC ₅₀)	ERR β 1.330 μ M (IC ₅₀)	ER α 1.240 μ M (IC ₅₀)

REFERENCES

[1]. Kim J, et al. Discovery of Potent, Selective, and Orally Bioavailable Estrogen-Related Receptor- γ Inverse Agonists To Restore the Sodium Iodide Symporter Function in Anaplastic Thyroid Cancer. *J Med Chem.* 2019 Feb 28;62(4):1837-1858.

Caution: Product has not been fully validated for medical applications. For research use only.

Tel: 609-228-6898

Fax: 609-228-5909

E-mail: tech@MedChemExpress.com

Address: 1 Deer Park Dr, Suite Q, Monmouth Junction, NJ 08852, USA