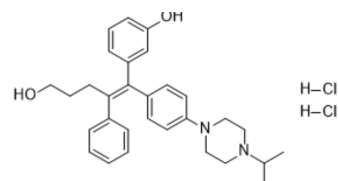


ERRγ inverse agonist 1

Cat. No.:	HY-114411
CAS No.:	2316832-86-5
Molecular Formula:	C ₃₀ H ₃₈ Cl ₂ N ₂ O ₂
Molecular Weight:	529.54
Target:	Estrogen Receptor/ERR
Pathway:	Vitamin D Related/Nuclear Receptor
Storage:	Please store the product under the recommended conditions in the Certificate of Analysis.



BIOLOGICAL ACTIVITY

Description	ERRγ Inverse Agonist 1 (Compound 12) is a potent, selective and orally bioavailable Estrogen-related Receptor gamma (ERRγ) inverse agonist, with an IC ₅₀ of 40 nM ^[1] .		
IC₅₀ & Target	ERRγ 0.040 μM (IC ₅₀)	ERRβ 1.330 μM (IC ₅₀)	ERα 1.240 μM (IC ₅₀)

REFERENCES

[1]. Kim J, et al. Discovery of Potent, Selective, and Orally Bioavailable Estrogen-Related Receptor-γ Inverse Agonists To Restore the Sodium Iodide Symporter Function in Anaplastic Thyroid Cancer. *J Med Chem.* 2019 Feb 28;62(4):1837-1858.

Caution: Product has not been fully validated for medical applications. For research use only.

Tel: 609-228-6898

Fax: 609-228-5909

E-mail: tech@MedChemExpress.com

Address: 1 Deer Park Dr, Suite Q, Monmouth Junction, NJ 08852, USA