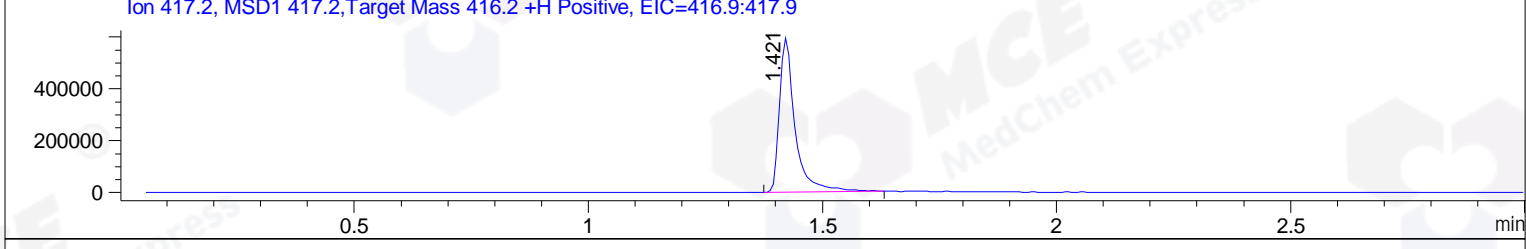
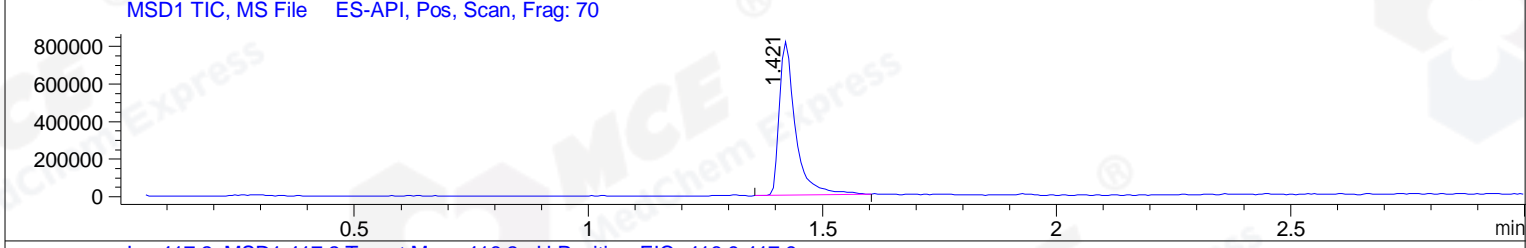
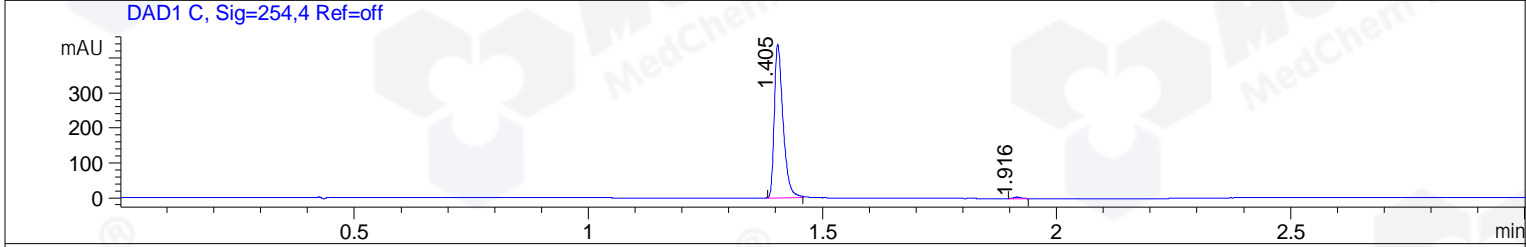
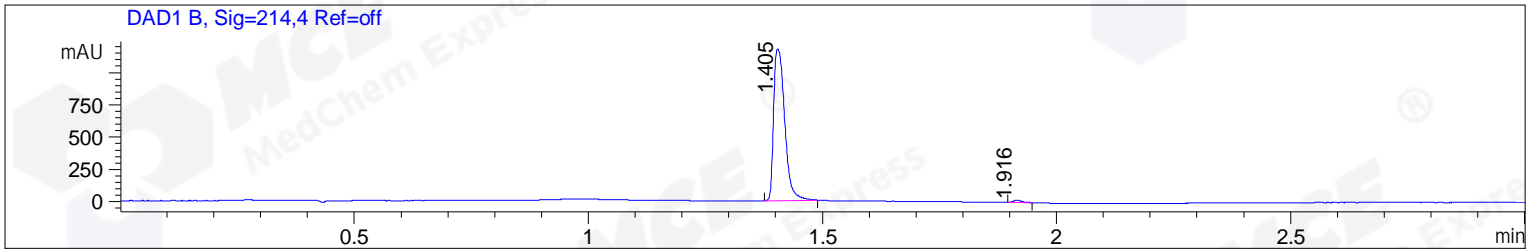


File ..1\DATA\2019\20190219\544\BIZ2019-218-CXL4.D Tgt Mass (CHM):  
 Injection Date : 19 Feb 19 7:33 pm +0800 Seq. Line : 44  
 Sample Name : BIZ2019-218-CXL4 Location : PL-C-04  
 Acq. Operator : LQ\_1052 Inj : 1  
 Spec. Reported : MS Integration Inj Volume : 1 ul  
 Acq. Method : D:\Chem32\1\data\2019\20190219\544\1-POS-3MIN-1.M  
 Analysis Method : D:\CHEM32\1\DATA\2019\20190219\544\1-POS-3MIN-1.M  
 Catalog No : HY-114423 Batch#38353  
 Method Info : Mobile Phase: A: water(0.01%TFA) B:ACN(0.01%TFA)  
 Gradient: 5% to 95%B within 1.3 min  
 Flow Rate :1.8ml/min  
 Column :SunFire C18, 4.6\*50mm,3.5um A-RP-314  
 Oven Temperature : 45



Integration Results for DAD1 B, Sig=214,4 Ref=off

RetTim	Width	Area	Height	Area%	MS (+)
1.40	0.03	1944.96	1175.97	98.70	417
1.92	0.02	25.71	20.09	1.30	417

Integration Results for DAD1 C, Sig=254,4 Ref=off

RetTim	Width	Area	Height	Area%	MS (+)
1.40	0.02	570.66	439.45	99.17	417
1.92	0.02	4.76	4.15	0.83	417

Integration Results for MSD1 TIC, MS File

RetTim	Width	Area	Height	Area%	MS (+)
1.42	0.04	1973020.63	818716.88	100.00	417

Ret. Time: 1.42

<<<< POSITIVE SPECTRA >>>>

ES-API Positive

