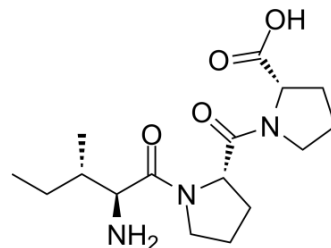


H-Ile-Pro-Pro-OH

Cat. No.:	HY-114424
CAS No.:	26001-32-1
Molecular Formula:	C ₁₆ H ₂₇ N ₃ O ₄
Molecular Weight:	325.4
Target:	Angiotensin-converting Enzyme (ACE)
Pathway:	Metabolic Enzyme/Protease
Storage:	Please store the product under the recommended conditions in the Certificate of Analysis.



BIOLOGICAL ACTIVITY

Description	H-Ile-Pro-Pro-OH, a milk-derived peptide ^[1] , inhibits angiotensin-converting enzyme (ACE) ^[1] with an IC ₅₀ of 5 μM ^[2] . Antihypertensive tripeptides ^[1] .
IC₅₀ & Target	IC ₅₀ : 5 μM (ACE) ^[2]
In Vitro	Ile-Pro-Pro (IPP; 1 nM, 0.1 μM, and 10 μM) increases nitric oxide (NO) production in human umbilical vein endothelial cells (HUVECs) ^[1] . MCE has not independently confirmed the accuracy of these methods. They are for reference only.
In Vivo	Ile-Pro-Pro (IPP; 30 mg/kg per day; 0.3 g/L) attenuates arterial dysfunction in L-NAME-treated rats ^[1] Ile-Pro-Pro decreases blood pressure in spontaneously hypertensive rats (SHR) ^[1] . Ile-Pro-Pro attenuates the development of atherosclerosis in apolipoprotein E-deficient (apoE(-/-)) mice ^[1] . MCE has not independently confirmed the accuracy of these methods. They are for reference only.

REFERENCES

- [1]. Nonaka A, et al. The milk-derived peptides Val-Pro-Pro and Ile-Pro-Pro attenuate arterial dysfunction in L-NAME-treated rats. *Hypertens Res.* 2014 Aug;37(8):703-7.
- [2]. Nakamura Y, et al. Purification and characterization of angiotensin I-converting enzyme inhibitors from sour milk. *J Dairy Sci.* 1995 Apr;78(4):777-83.

Caution: Product has not been fully validated for medical applications. For research use only.

Tel: 609-228-6898

Fax: 609-228-5909

E-mail: tech@MedChemExpress.com

Address: 1 Deer Park Dr, Suite Q, Monmouth Junction, NJ 08852, USA