

H-Ile-Pro-Pro-OH (hydrochloride)

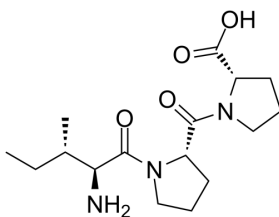
Cat. No.: HY-114424A
CAS No.: 1208862-61-6
Batch No.: 156295
Chemical Name: L-Proline, L-isoleucyl-L-prolyl-, hydrochloride (1:1)

PHYSICAL AND CHEMICAL PROPERTIES

Molecular Formula: C₁₆H₂₈ClN₃O₄
Molecular Weight: 361.86
Storage: Sealed storage, away from moisture and light
Powder -80°C 2 years
-20°C 1 years

* In solvent : -80°C, 6 months; -20°C, 1 month (sealed storage, away from moisture and light)

Chemical Structure:



HCl

ANALYTICAL DATA

Appearance: Off-white to light yellow (Solid)
¹H NMR Spectrum: Consistent with structure
MS: Consistent with structure
Purity (HPLC): 98.48%
Conclusion: The product has been tested and complies with the given specifications.

Caution: Product has not been fully validated for medical applications. For research use only.

Tel: 609-228-6898

Fax: 609-228-5909

E-mail: tech@MedChemExpress.com

Address: 1 Deer Park Dr, Suite Q, Monmouth Junction, NJ 08852, USA