

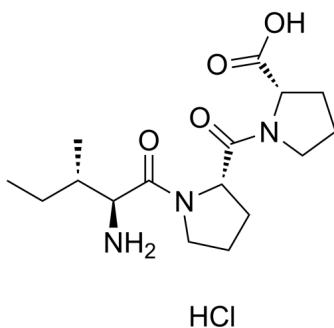
H-Ile-Pro-Pro-OH (hydrochloride)

Cat. No.: HY-114424A
Batch No.: 66695
CAS No.: 1208862-61-6
Molecular Formula: C₁₆H₂₈ClN₃O₄

ANALYTICAL DATA

Theoretical: C(-), H(-), N(-), Peptide Content(≥60.0%)
Result: C(50.45%), H(8.97%), N(12.70%), Peptide Content(98.44%)

Chemical Structure:



Caution: Product has not been fully validated for medical applications. For research use only.

Tel: 609-228-6898

Fax: 609-228-5909

E-mail: tech@MedChemExpress.com

Address: 1 Deer Park Dr, Suite Q, Monmouth Junction, NJ 08852, USA