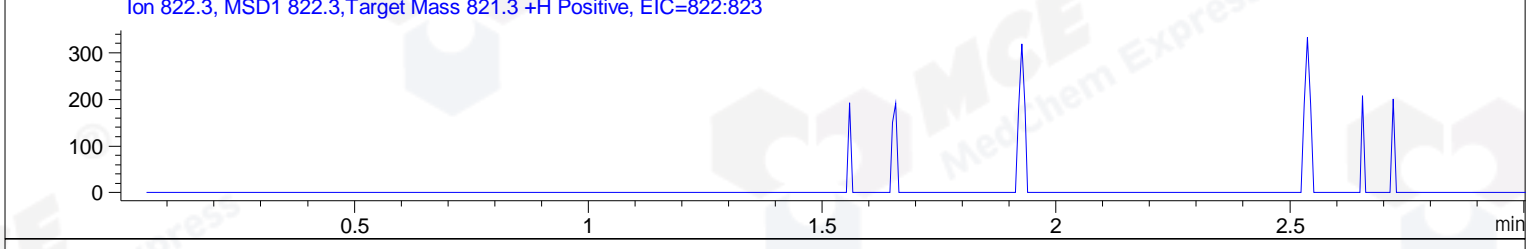
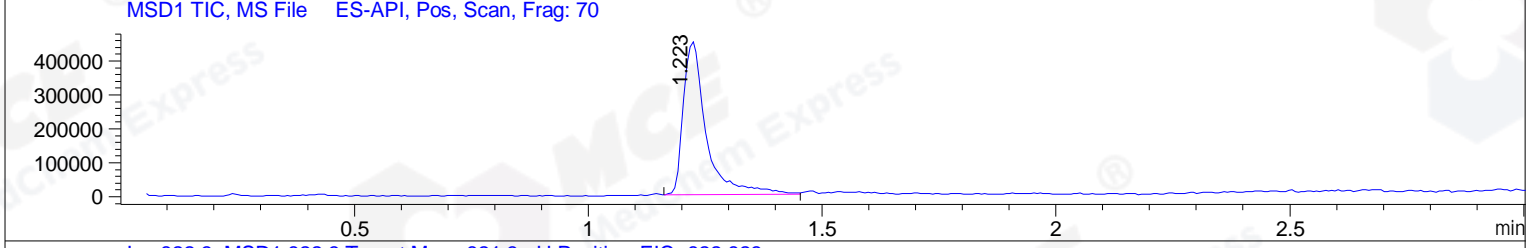
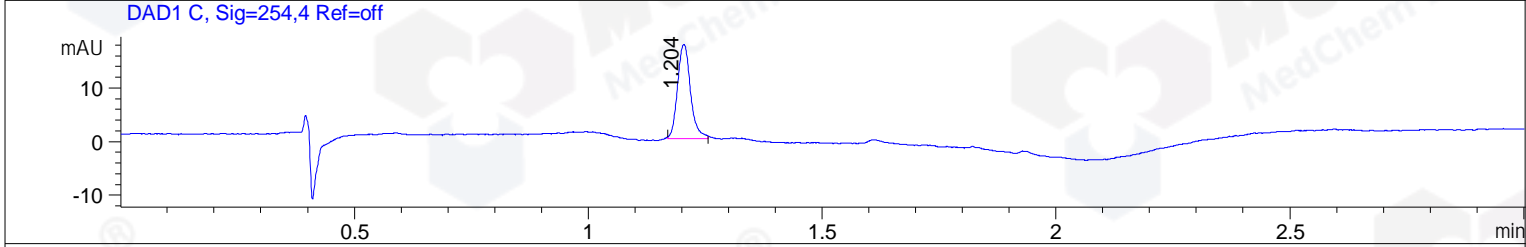
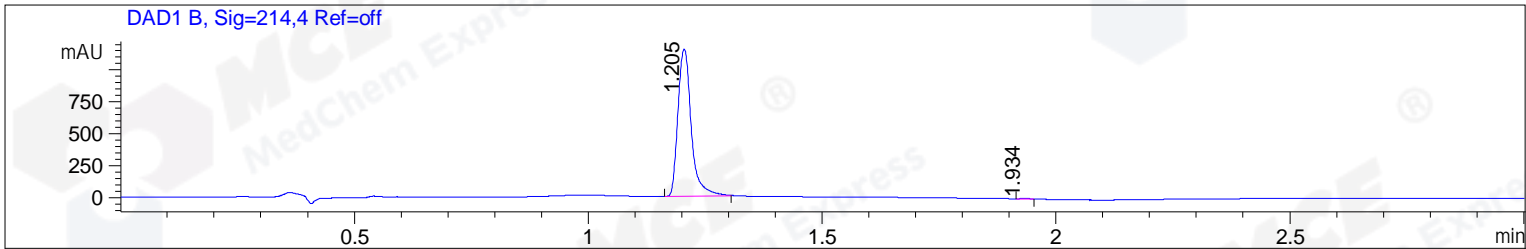


File ..\DATA\2019\20190411\560\BIZ2019-410-WYQ12.D Tgt Mass (CHM):
 Injection Date : 11 Apr 19 1:02 pm +0800 Seq. Line : 4
 Sample Name : BIZ2019-410-WYQ12 Location : P2-E-04
 Acq. Operator : LQ_1052 Inj : 1
 Spec. Reported : MS Integration Inj Volume : 8 ul
 Acq. Method : D:\Chem32\1\data\2019\20190411\560\1-POS-3MIN-1.M
 Analysis Method : D:\CHEM32\1\DATA\2019\20190411\560\1-POS-3MIN-1.M
 Catalog No : HY-114426A Batch# 39760-20190410
 Method Info : Mobile Phase: A: water(0.01%TFA) B:ACN(0.01%TFA)
 Gradient: 5% to 95%B within 1.3 min
 Flow Rate :1.8ml/min
 Column :SunFire C18, 4.6*50mm,3.5um A-RP-314
 Oven Temperature : 45



Integration Results for DAD1 B, Sig=214,4 Ref=off

RetTim	Width	Area	Height	Area%	MS (+)
1.21	0.03	2288.04	1151.23	99.72	355
1.93	0.02	6.31	4.37	0.28	142

Integration Results for DAD1 C, Sig=254,4 Ref=off

RetTim	Width	Area	Height	Area%	MS (+)
1.20	0.03	33.96	17.61	100.00	355

Integration Results for MSD1 TIC, MS File

RetTim	Width	Area	Height	Area%	MS (+)
1.22	0.05	1552913.88	452601.13	100.00	355

Ret. Time: 1.22

<<<< POSITIVE SPECTRA >>>>

ES-API Positive

