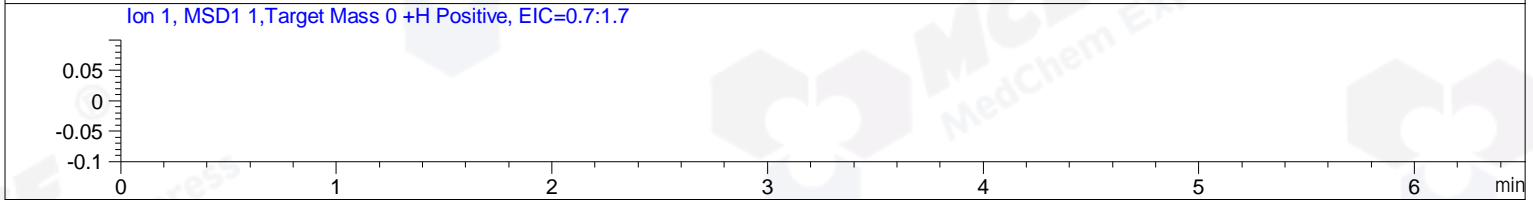
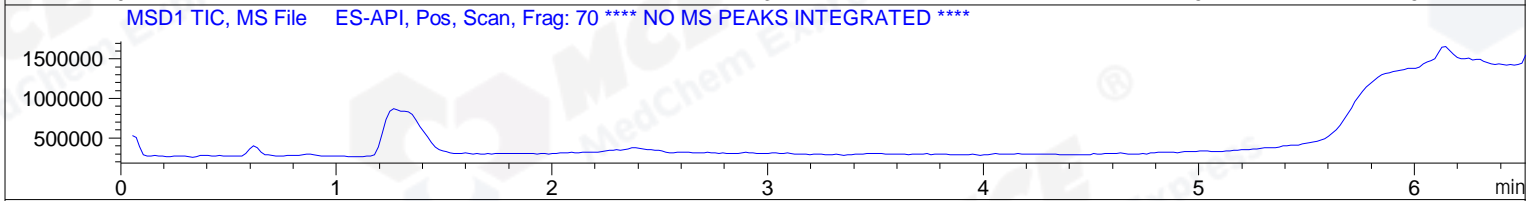
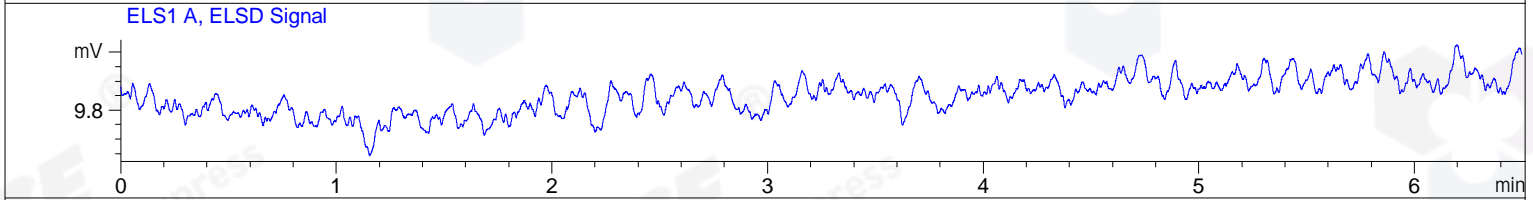
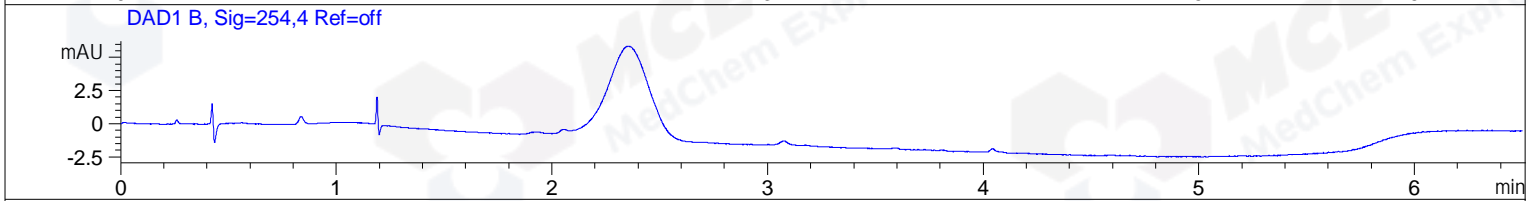
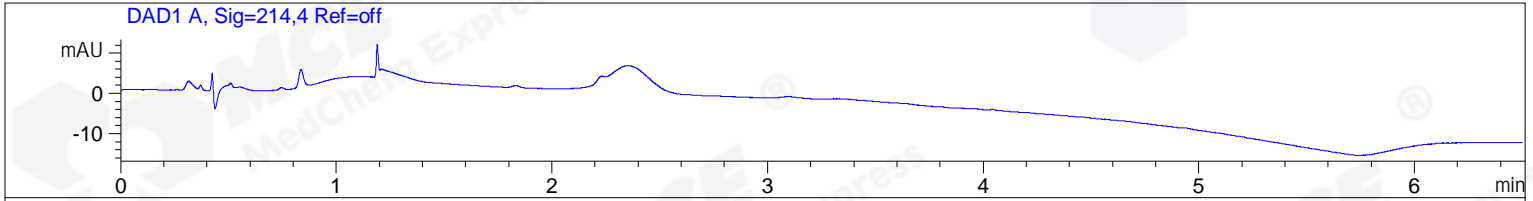


File ..S03\Data\20190429\20190429\MT6658-032-1\_0.D Tgt Mass (CHM):  
 Injection Date : 29 Apr 19 9:35 am +0800 Seq. Line : 12  
 Sample Name : MT6658-032-1\_0 Location : PL-A-11  
 Acq. Operator : SYSTEM Inj : 1  
 Spec. Reported : MS Integration Inj Volume : 1 ul  
 Acq. Method : D:\LCMS03\Data\20190429\20190429\1-POS-7MIN.M  
 Analysis Method : D:\LCMS03\Data\20190429\20190429\1-POS-7MIN.M  
 Catalog No : HY-114430 Batch#40591  
 Method Info : Mobile Phase: A: water(0.01%TFA) B:ACN(0.01%TFA)  
 Gradient: 5% to 95%B within 5 min  
 Flow Rate :1.8ml/min  
 Column :SunFire C18, 4.6\*50mm,3.5um A-RP-392  
 Oven Temperature : 45C



Integration Results for DAD1 A, Sig=214,4 Ref=off

RetTim	Width	Area	Height	Area%	MS (+)
-----	-----	-----	-----	-----	-----

Integration Results for DAD1 B, Sig=254,4 Ref=off

RetTim	Width	Area	Height	Area%	MS (+)
-----	-----	-----	-----	-----	-----

Integration Results for ELS1 A, ELSD Signal

RetTim	Width	Area	Height	Area%	MS (+)
-----	-----	-----	-----	-----	-----

Integration Results for MSD1 TIC, MS File

RetTim	Width	Area	Height	Area%	MS (+)
-----	-----	-----	-----	-----	-----

File ..S03\Data\20190429\20190429\MT6658-032-1-1.D Tgt Mass (CHM):

Injection Date : 29 Apr 19 11:05 am +0800 Seq. Line : 29

Sample Name : MT6658-032-1 Location : P1-B-01

Acq. Operator : SYSTEM Inj : 1

Spec. Reported : MS Integration Inj Volume : 1 ul

Acq. Method : D:\LCMS03\Data\20190429\20190429\1-POS-7MIN-1500.M

Analysis Method : D:\LCMS03\Data\20190429\20190429\1-POS-7MIN-1500.M

Catalog No : HY-114430 Batch#40591

Method Info : Mobile Phase: A: water(0.01%TFA) B:ACN(0.01%TFA)

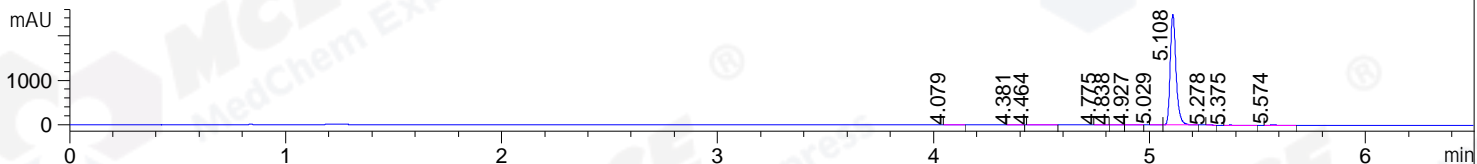
Gradient: 5% to 95%B within 5 min

Flow Rate :1.8ml/min

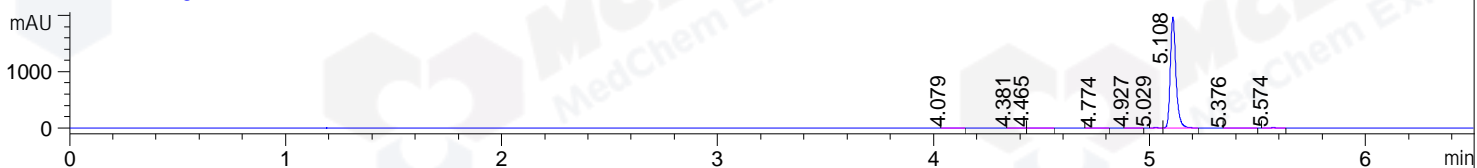
Column :SunFire C18, 4.6\*50mm,3.5um A-RP-392

Oven Temperature : 45C

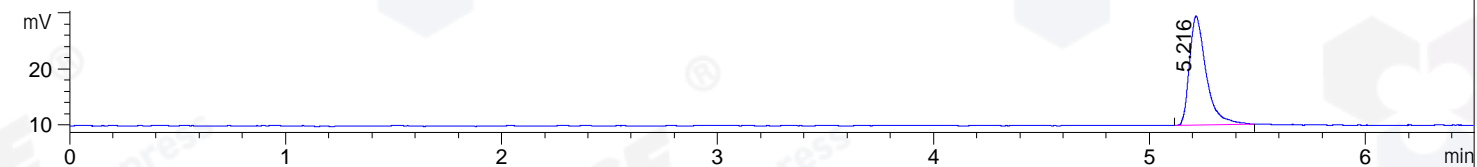
DAD1 A, Sig=214,4 Ref=off



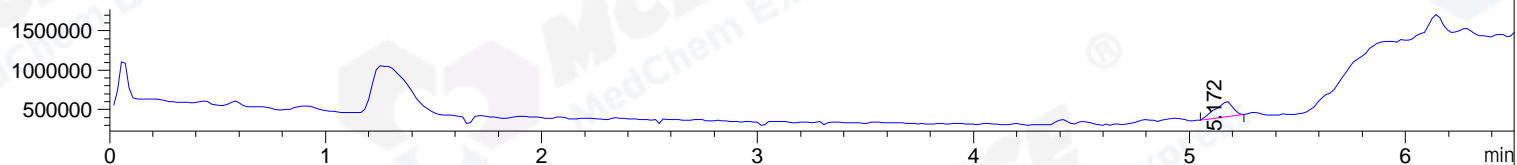
DAD1 B, Sig=254,4 Ref=off



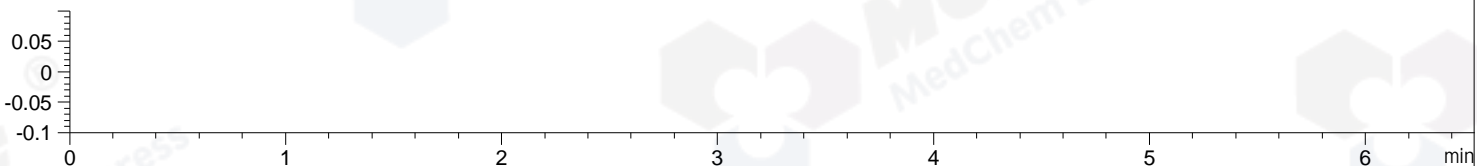
ELS1 A, ELSD Signal



MSD1 TIC, MS File ES-API, Pos, Scan, Frag: 70



Ion 1, MSD1 1, Target Mass 0 +H Positive, EIC=0.7:1.7



Integration Results for DAD1 A, Sig=214,4 Ref=off

RetTim	Width	Area	Height	Area%	MS (+)
4.08	0.03	3.64	2.04	0.08	114
4.38	0.03	4.46	2.54	0.09	114
4.46	0.03	7.68	3.70	0.16	114
4.77	0.03	3.59	2.02	0.08	114
4.84	0.03	2.84	1.37	0.06	114
4.93	0.03	7.51	3.56	0.16	114
5.03	0.03	11.13	6.81	0.24	114
5.11	0.03	4664.63	2484.00	98.67	786
5.28	0.02	1.47	1.12	0.03	114
5.38	0.04	5.88	2.35	0.12	114
5.57	0.03	14.62	7.22	0.31	114

Integration Results for DAD1 B, Sig=254,4 Ref=off

RetTim	Width	Area	Height	Area%	MS (+)
4.08	0.03	3.88	2.07	0.11	114
4.38	0.03	4.76	2.64	0.13	114
4.46	0.03	4.89	2.29	0.14	114

4.77	0.03	2.47	1.20	0.07	114
4.93	0.03	6.61	3.30	0.18	114
5.03	0.03	7.79	4.75	0.22	114
5.11	0.03	3553.73	1964.49	98.80	786
5.38	0.04	3.88	1.46	0.11	114
5.57	0.03	8.89	4.58	0.25	114

## Integration Results for ELS1 A, ELSD Signal

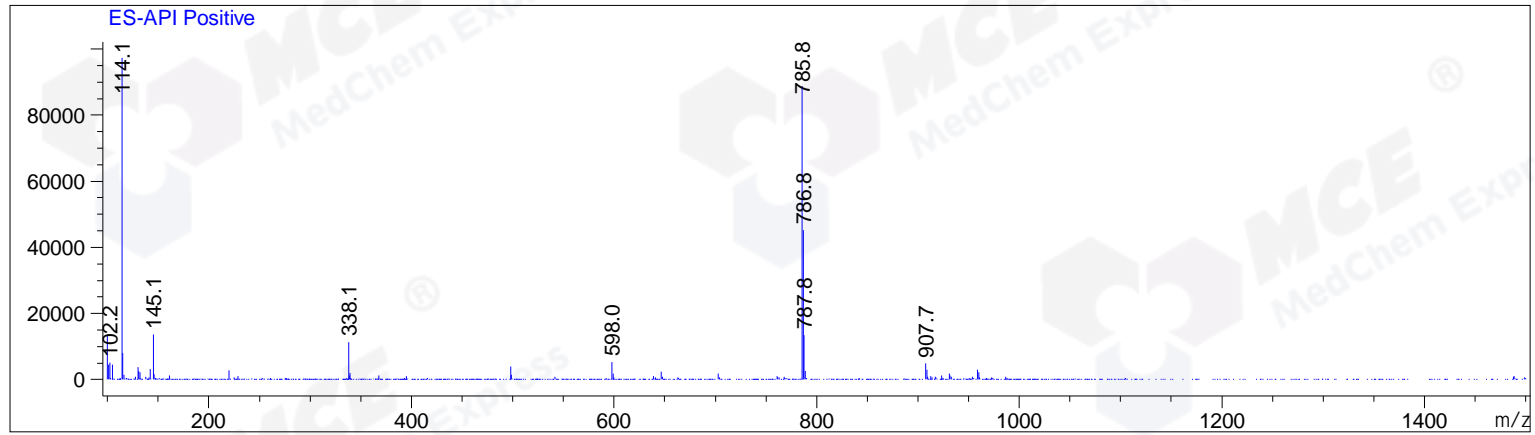
RetTim	Width	Area	Height	Area%	MS (+)
5.22	0.08	105.28	19.47	100.00	114

## Integration Results for MSD1 TIC, MS File

RetTim	Width	Area	Height	Area%	MS (+)
5.17	0.08	1094812.63	188994.38	100.00	114

Ret. Time: 5.17

<<<< POSITIVE SPECTRA >>>>



\*\*\* End of Report \*\*\*