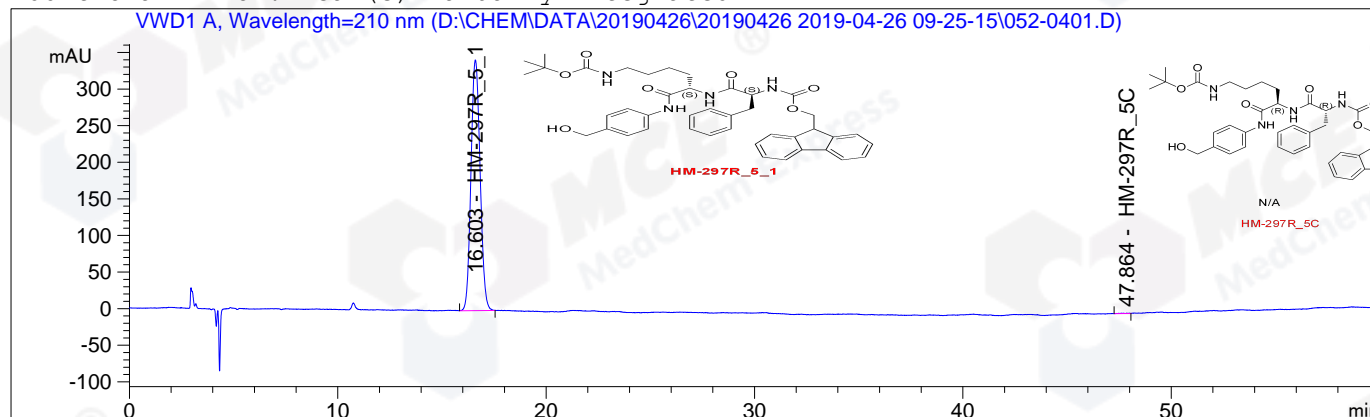


```

=====
Acq. Operator   : ZXM                               Seq. Line :    4
Acq. Instrument : HPLC-04                           Location  : Vial 52
Injection Date  : 4/26/2019 11:48:57 AM             Inj       :    1
                                                    Inj Volume: 5.0 µl
Acq. Method     : D:\CHEM\DATA\20190426\20190426 2019-04-26 09-25-15\HM-297R_5_1+5A_1+5B+5C,
                210NM,C1.M
Last changed    : 4/26/2019 10:45:57 AM by ZXM
                (modified after loading)
Analysis Method : D:\CHEM\METHODS\HM-297R_5_1+5A_1+5B+5C,210NM,C1.M
Last changed    : 4/26/2019 4:18:05 PM by ZXM
Catalog No     : HY-114430 Batch#40591
                C-NP-38
=====
  
```

Additional Info : Peak(s) manually integrated



Area Percent Report

```

=====
Sorted By      : Signal
Calib. Data Modified : 4/26/2019 11:51:34 AM
Multiplier:    : 1.0000
Dilution:     : 1.0000
Use Multiplier & Dilution Factor with ISTDs
=====
  
```

Signal 1: VWD1 A, Wavelength=210 nm

Peak #	RetTime [min]	Type	Width [min]	Area mAU	Area %	Name
1	13.897		0.0000	0.00000	0.0000	HM-297R_5A_1
2	15.133		0.0000	0.00000	0.0000	HM-297R_5B
3	16.603	MM R	0.5068	1.04126e4	99.8647	HM-297R_5_1
4	47.864	MM R	0.4411	14.10587	0.1353	HM-297R_5C

Totals : 1.04267e4

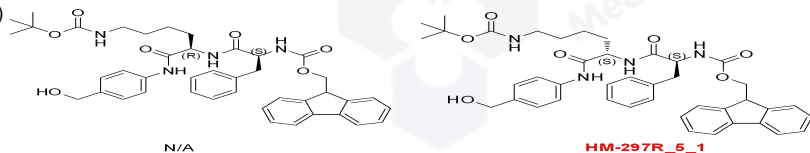
1 Warnings or Errors :

Warning : Calibrated compound(s) not found

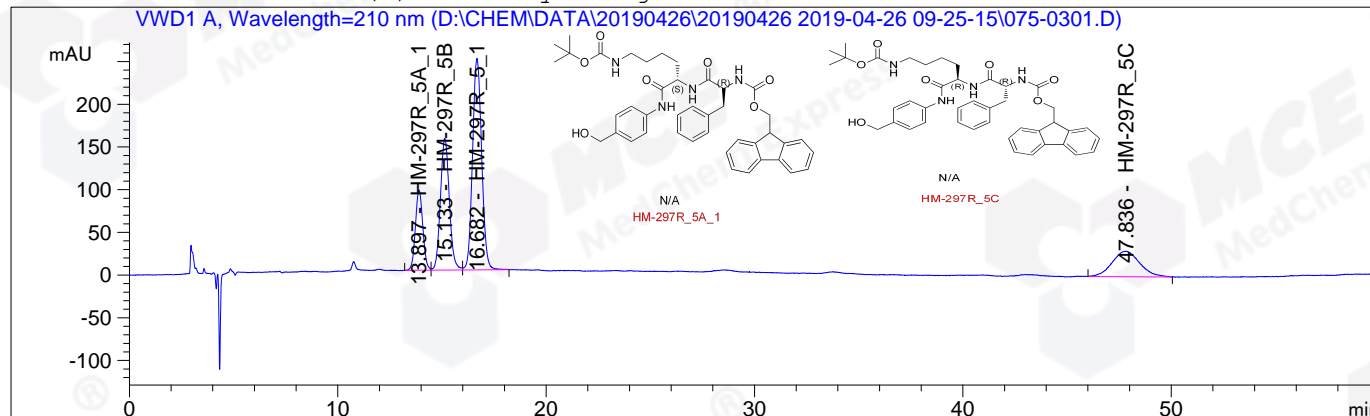
\*\*\* End of Report \*\*\*

```

=====
Acq. Operator   : ZXM                               Seq. Line :    3
Acq. Instrument : HPLC-04                           Location  : Vial 75
Injection Date  : 4/26/2019 10:47:10 AM             Inj       :    1
                                                    Inj Volume: 5.0 µl
Acq. Method     : D:\CHEM\DATA\20190426\20190426 2019-04-26 09-25-15\HM-297R_5_1+5A_1+5B+5C,
210NM,C1.M
Last changed    : 4/26/2019 10:45:57 AM by ZXM
                (modified after loading)
Analysis Method : D:\CHEM\METHODS\HM-297R_5_1+5A_1+5B+5C,210NM,C1.M
Last changed    : 4/26/2019 11:51:34 AM by ZXM
                (modified after loading)
Catalog No     : HY-114430 Batch#40591
                C-NP-38
  
```



Additional Info : Peak(s) manually integrated



Area Percent Report

```

Sorted By      : Signal
Calib. Data Modified : 4/26/2019 11:51:34 AM
Multiplier:    : 1.0000
Dilution:      : 1.0000
Use Multiplier & Dilution Factor with ISTDs
  
```

Signal 1: VWD1 A, Wavelength=210 nm

Peak #	RetTime [min]	Type	Width [min]	Area mAU	Area %	Name
1	13.897	MF R	0.4121	2322.45972	13.4775	HM-297R_5A_1
2	15.133	FM R	0.4964	4593.02002	26.6538	HM-297R_5B
3	16.682	FM R	0.5083	7555.73828	43.8468	HM-297R_5_1
4	47.836	MM R	1.5387	2760.93018	16.0220	HM-297R_5C

Totals : 1.72321e4

\*\*\* End of Report \*\*\*