

File ..DATA\2019\20190227\543\BIZ2019-226-WYQ4.D Tgt Mass (CHM):

Injection Date : 27 Feb 19 11:49 am +0800 Seq. Line : 27

Sample Name : BIZ2019-226-WYQ4 Location : PI-A-09

Acq. Operator : LQ\_1052 Inj : 1

Spec. Reported : MS Integration Inj Volume : 5 ul

Acq. Method : D:\Chem32\1\data\2019\20190227\543\1-POS-3MIN-1.M

Analysis Method : D:\CHEM32\1\DATA\2019\20190227\543\1-POS-3MIN-1.M

Catalog No : HY-114452 Batch#38384

Method Info : Mobile Phase: A: water(0.01%TFA) B:ACN(0.01%TFA)

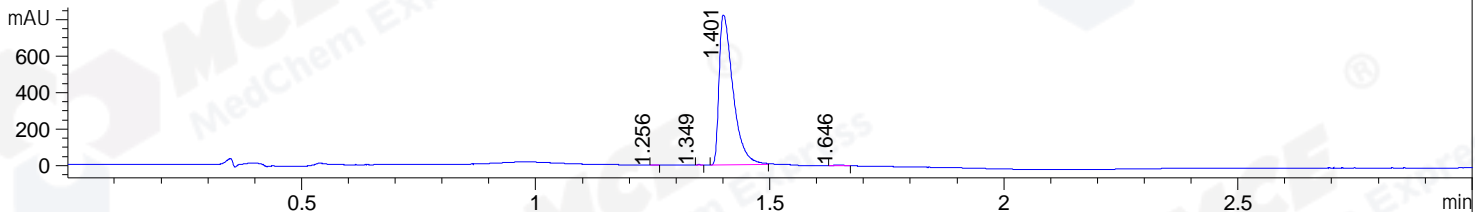
Gradient: 5% to 95%B within 1.3 min

Flow Rate :1.8ml/min

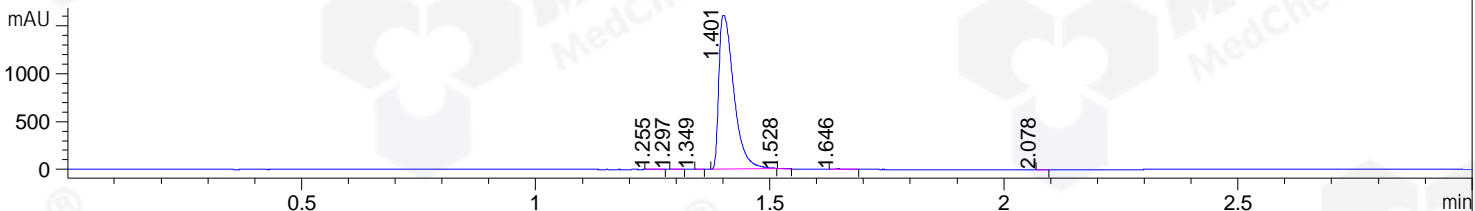
Column :SunFire C18, 4.6\*50mm,3.5um A-RP-314

Oven Temperature : 45

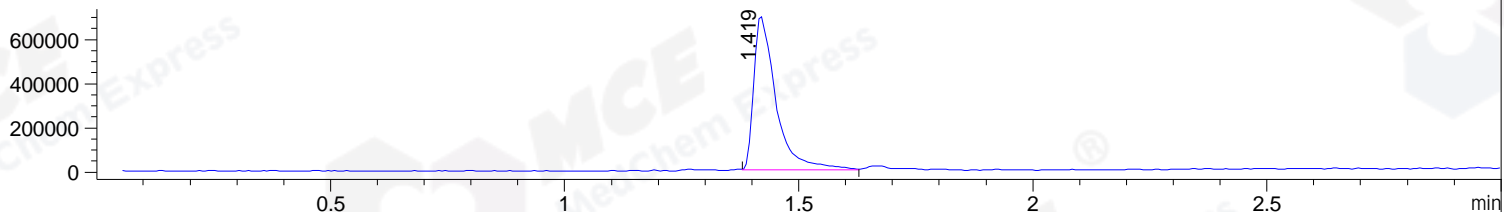
DAD1 B, Sig=214,4 Ref=off



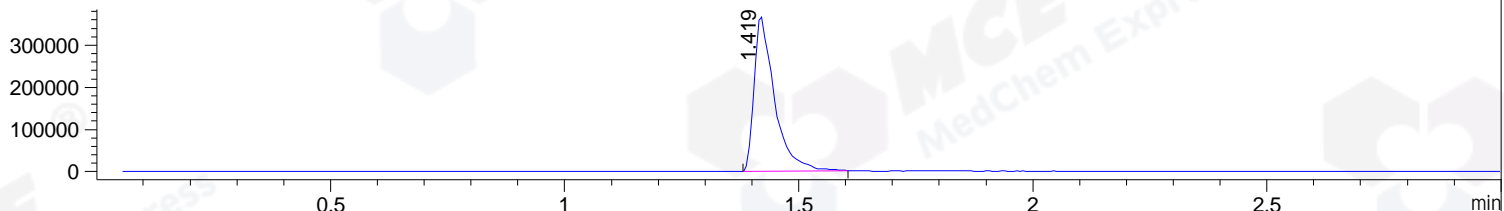
DAD1 C, Sig=254,4 Ref=off



MSD1 TIC, MS File ES-API, Pos, Scan, Frag: 70



Ion 481.1, MSD1 481.1, Target Mass 480.1 +H Positive, EIC=480.8:481.8



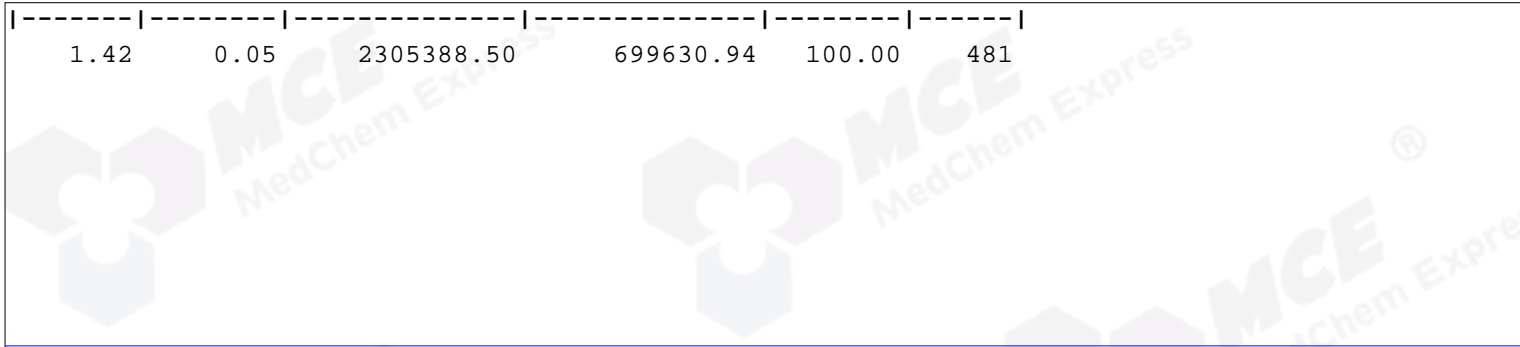
Integration Results for DAD1 B, Sig=214,4 Ref=off

RetTim	Width	Area	Height	Area%	MS (+)
1.26	0.01	0.66	1.06	0.04	130
1.35	0.01	1.18	3.16	0.07	130
1.40	0.03	1701.66	821.78	99.56	481
1.65	0.03	5.72	3.77	0.33	630

Integration Results for DAD1 C, Sig=254,4 Ref=off

RetTim	Width	Area	Height	Area%	MS (+)
1.26	0.02	3.42	2.84	0.10	130
1.30	0.02	0.62	0.63	0.02	130
1.35	0.01	1.25	3.38	0.04	130
1.40	0.04	3558.42	1606.92	99.49	481
1.53	0.02	2.72	2.45	0.08	481
1.65	0.03	9.46	5.36	0.26	630
2.08	0.02	0.63	0.67	0.02	ND

Integration Results for MSD1 TIC, MS File



RetTim	Width	Area	Height	Area%	MS (+)
1.42	0.05	2305388.50	699630.94	100.00	481

Ret. Time: 1.42

<<<< POSITIVE SPECTRA >>>>

ES-API Positive

