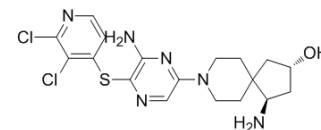


SHP2 IN-1

Cat. No.:	HY-114460
CAS No.:	1801764-90-8
Molecular Formula:	C ₁₈ H ₂₂ Cl ₂ N ₆ OS
Molecular Weight:	441.38
Target:	Phosphatase
Pathway:	Metabolic Enzyme/Protease
Storage:	Please store the product under the recommended conditions in the COA.



BIOLOGICAL ACTIVITY

Description	SHP2 IN-1 (compound 13) is an allergic inhibitor of SHP2 (PTPN11), with an IC ₅₀ of 3 nM.
IC ₅₀ & Target	IC ₅₀ : 3 nM (SHP2) ^[1] .

REFERENCES

[1]. WO2018130928A1.

Caution: Product has not been fully validated for medical applications. For research use only.

Tel: 609-228-6898

Fax: 609-228-5909

E-mail: tech@MedChemExpress.com

Address: 1 Deer Park Dr, Suite Q, Monmouth Junction, NJ 08852, USA