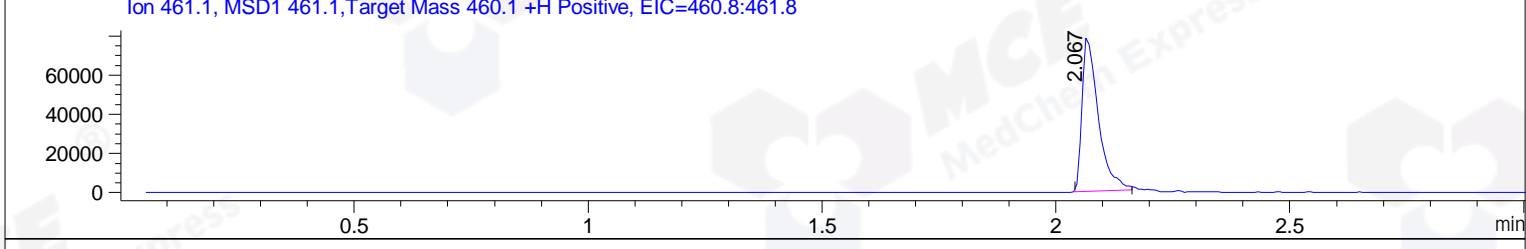
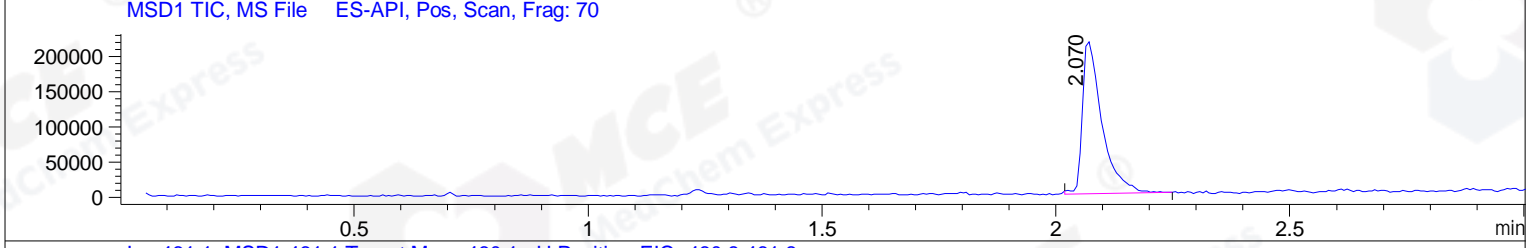
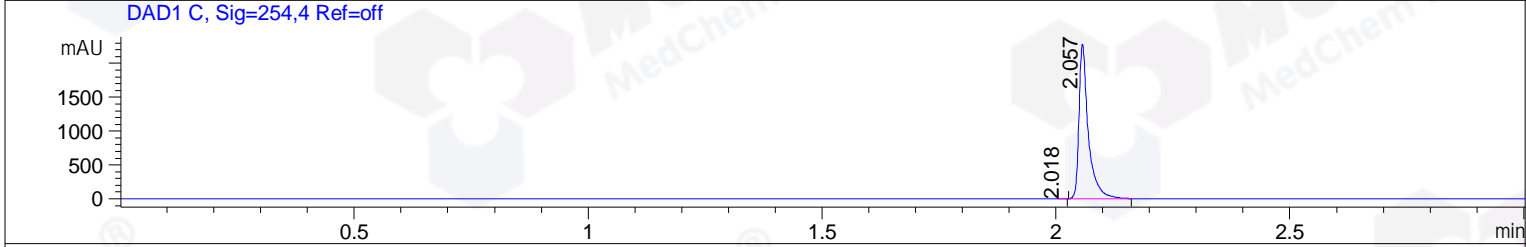
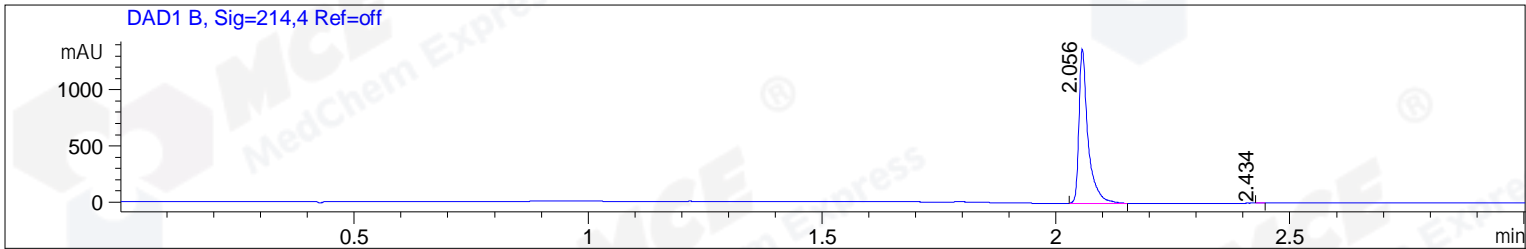


File ..\DATA\2019\20190426\562\BIZ2019-426-CXL33.D Tgt Mass (CHM):
 Injection Date : 26 Apr 19 4:38 pm +0800 Seq. Line : 11
 Sample Name : BIZ2019-426-CXL33 Location : P2-E-01
 Acq. Operator : LQ_1052 Inj : 1
 Spec. Reported : MS Integration Inj Volume : 1 ul
 Acq. Method : D:\Chem32\1\data\2019\20190426\562\1-POS-3MIN-1.M
 Analysis Method : D:\CHEM32\1\DATA\2019\20190426\562\1-POS-3MIN-1.M
 Catalog No : HY-114490 Batch#40720
 Method Info : Mobile Phase: A: water(0.01%TFA) B:ACN(0.01%TFA)
 Gradient: 5% to 95%B within 1.3 min
 Flow Rate :1.8ml/min
 Column :SunFire C18, 4.6*50mm,3.5um A-RP-322
 Oven Temperature : 45



Integration Results for DAD1 B, Sig=214,4 Ref=off

RetTim	Width	Area	Height	Area%	MS (+)
2.06	0.02	1866.26	1376.62	99.98	461
2.43	0.01	0.34	0.49	0.02	ND

Integration Results for DAD1 C, Sig=254,4 Ref=off

RetTim	Width	Area	Height	Area%	MS (+)
2.02	0.01	0.63	0.79	0.02	ND
2.06	0.02	3186.09	2284.21	99.98	461

Integration Results for MSD1 TIC, MS File

RetTim	Width	Area	Height	Area%	MS (+)
2.07	0.04	631650.94	217169.73	100.00	461

Ret. Time: 2.07

<<<< POSITIVE SPECTRA >>>>

ES-API Positive

