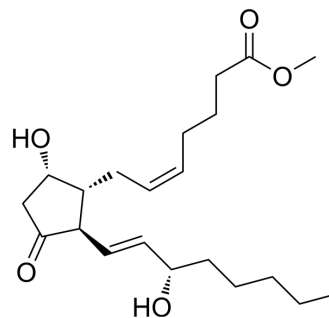


Prostaglandin D2 methyl ester

Cat. No.:	HY-114623
CAS No.:	49852-81-5
Molecular Formula:	C ₂₁ H ₃₄ O ₅
Molecular Weight:	366.49
Target:	Prostaglandin Receptor
Pathway:	GPCR/G Protein
Storage:	Please store the product under the recommended conditions in the Certificate of Analysis.



BIOLOGICAL ACTIVITY

Description

Prostaglandin D2 methyl ester is a prodrug form of Prostaglandin D2. Prostaglandin D2 methyl ester binds to the human and mouse PGD2 receptors (DP and CRTH2) with K_i values of 160 nM, 175 nM, 460 nM, and 270 nM for mCRTH2, mDP, hCRTH2, and hDP, respectively^[1].

REFERENCES

[1]. Hiroyuki Hirai, et al. Gene structure and functional properties of mouse CRTH2, a prostaglandin D2 receptor. *Biochem Biophys Res Commun.* 2003 Aug 8;307(4):797-802.

Caution: Product has not been fully validated for medical applications. For research use only.

Tel: 609-228-6898

Fax: 609-228-5909

E-mail: tech@MedChemExpress.com

Address: 1 Deer Park Dr, Suite Q, Monmouth Junction, NJ 08852, USA