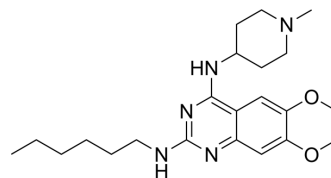


## MS012

Cat. No.:	HY-114628
CAS No.:	2089617-83-2
Molecular Formula:	C <sub>22</sub> H <sub>35</sub> N <sub>5</sub> O <sub>2</sub>
Molecular Weight:	401.55
Target:	GLP Receptor
Pathway:	GPCR/G Protein
Storage:	Please store the product under the recommended conditions in the Certificate of Analysis.



### BIOLOGICAL ACTIVITY

Description	MS012 is a selective GLP inhibitor (IC <sub>50</sub> =7 nM). MS012 can be used in research of GLP dysregulation, including cancer, inflammatory diseases, and neuroregenerative disorders <sup>[1]</sup> .
IC <sub>50</sub> & Target	IC <sub>50</sub> : 7 nM (GLP) <sup>[1]</sup> .

### REFERENCES

[1]. Xiong Y, et al. Discovery of Potent and Selective Inhibitors for G9a-Like Protein (GLP) Lysine Methyltransferase. J Med Chem. 2017 Mar 9;60(5):1876-1891.

**Caution: Product has not been fully validated for medical applications. For research use only.**

Tel: 609-228-6898

Fax: 609-228-5909

E-mail: tech@MedChemExpress.com

Address: 1 Deer Park Dr, Suite Q, Monmouth Junction, NJ 08852, USA