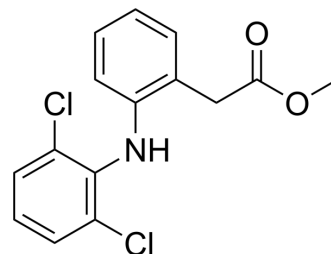


Diclofenac methyl ester

Cat. No.:	HY-114689		
CAS No.:	15307-78-5		
Molecular Formula:	C ₁₅ H ₁₃ Cl ₂ NO ₂		
Molecular Weight:	310.18		
Target:	Endogenous Metabolite		
Pathway:	Metabolic Enzyme/Protease		
Storage:	Powder	-20°C	3 years
		4°C	2 years
	In solvent	-80°C	6 months
		-20°C	1 month



SOLVENT & SOLUBILITY

In Vitro

DMSO : 12.5 mg/mL (40.30 mM; ultrasonic and warming and heat to 60°C)

Concentration	Mass		
	1 mg	5 mg	10 mg
1 mM	3.2239 mL	16.1197 mL	32.2393 mL
5 mM	0.6448 mL	3.2239 mL	6.4479 mL
10 mM	0.3224 mL	1.6120 mL	3.2239 mL

Please refer to the solubility information to select the appropriate solvent.

BIOLOGICAL ACTIVITY

Description

Diclofenac methyl ester is a diclofenac (HY-15036) derivative, which exhibits acute cytotoxicity with a LC₅₀ of 0.5 mg/L in *H. azteca*^[1].

REFERENCES

[1]. Fu Q, et al., Biotransformation Changes Bioaccumulation and Toxicity of Diclofenac in Aquatic Organisms. *Environ Sci Technol.* 2020 Apr 7;54(7):4400-4408.

Caution: Product has not been fully validated for medical applications. For research use only.

Tel: 609-228-6898

Fax: 609-228-5909

E-mail: tech@MedChemExpress.com

Address: 1 Deer Park Dr, Suite Q, Monmouth Junction, NJ 08852, USA