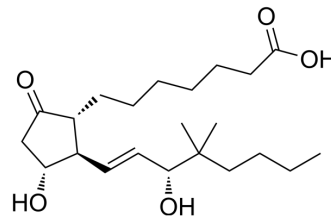


16,16-Dimethylprostaglandin E1

Cat. No.:	HY-114751
CAS No.:	41692-15-3
Molecular Formula:	C ₂₂ H ₃₈ O ₅
Molecular Weight:	382.53
Target:	Others
Pathway:	Others
Storage:	Please store the product under the recommended conditions in the Certificate of Analysis.



BIOLOGICAL ACTIVITY

Description	16,16-Dimethylprostaglandin E1 (16,16-dimethyl-PGE1) is a PGE1 (HY-B0131) analog, induces bronchoconstrict and vascular smooth muscle contractions and suppresses the indomethacin induced cellular elongation ^{[1][2][3]} .								
In Vivo	<p>16,16-Dimethylprostaglandin E1 (1 µg/kg•min for 30 min) accelerates blood pressure and heart rate recovery rate, increases catecholamine turnover, enhances levels of epinephrine and norepinephrine in plasma following acute hemorrhage in Sprague Dawley rats^[1].</p> <p>MCE has not independently confirmed the accuracy of these methods. They are for reference only.</p> <table border="1"> <tr> <td>Animal Model:</td> <td>Sprague-Dawley rats^[1]</td> </tr> <tr> <td>Dosage:</td> <td>1 µg/kg•min</td> </tr> <tr> <td>Administration:</td> <td>0-30 min</td> </tr> <tr> <td>Result:</td> <td>Improved blood pressure and heart rate, improved levels of epinephrine and norepinephrine im plasma.</td> </tr> </table>	Animal Model:	Sprague-Dawley rats ^[1]	Dosage:	1 µg/kg•min	Administration:	0-30 min	Result:	Improved blood pressure and heart rate, improved levels of epinephrine and norepinephrine im plasma.
Animal Model:	Sprague-Dawley rats ^[1]								
Dosage:	1 µg/kg•min								
Administration:	0-30 min								
Result:	Improved blood pressure and heart rate, improved levels of epinephrine and norepinephrine im plasma.								

REFERENCES

- [1]. Feuerstein G, et al., Prostaglandins, catecholamines, and cardiovascular responses to hemorrhage. *Am J Physiol.* 1981 Mar;240(3):R166-74.
- [2]. Jumblatt MM, et al., Prostaglandin E2 effects on corneal endothelial cyclic adenosine monophosphate synthesis and cell shape are mediated by a receptor of the EP2 subtype. *Invest Ophthalmol Vis Sci.* 1991 Feb;32(2):360-5.
- [3]. Strandberg K, et al., Bronchial effects of some prostaglandin E and F analogues. *Acta Physiol Scand.* 1977 Jun;100(2):172-81.

Caution: Product has not been fully validated for medical applications. For research use only.

Tel: 609-228-6898

Fax: 609-228-5909

E-mail: tech@MedChemExpress.com

Address: 1 Deer Park Dr, Suite Q, Monmouth Junction, NJ 08852, USA