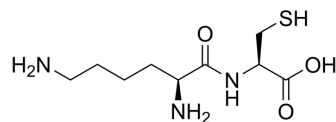


## Lysylcysteine

Cat. No.:	HY-114788
CAS No.:	106325-92-2
Molecular Formula:	C <sub>9</sub> H <sub>19</sub> N <sub>3</sub> O <sub>3</sub> S
Molecular Weight:	249.33
Target:	Others
Pathway:	Others
Storage:	Please store the product under the recommended conditions in the Certificate of Analysis.



### BIOLOGICAL ACTIVITY

<b>Description</b>	Lysylcysteine (L-Lysyl-L-cysteine) is a dipeptide composed of lysine and cysteine.
--------------------	--

### REFERENCES

[1]. Kiyat WE, et al. Application of Transglutaminase in Developing Cassava-based Wet Noodle for Quality and Shelf Life Improvement: A Review. Recent Pat Food Nutr Agric. 2020;11(3):229-234.

**Caution: Product has not been fully validated for medical applications. For research use only.**

Tel: 609-228-6898

Fax: 609-228-5909

E-mail: tech@MedChemExpress.com

Address: 1 Deer Park Dr, Suite Q, Monmouth Junction, NJ 08852, USA