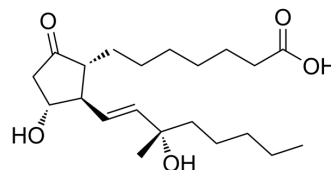


15-Methylprostaglandin E1

Cat. No.:	HY-114792
CAS No.:	35700-26-6
Molecular Formula:	C ₂₁ H ₃₆ O ₅
Molecular Weight:	368.51
Target:	Others
Pathway:	Others
Storage:	Please store the product under the recommended conditions in the Certificate of Analysis.



BIOLOGICAL ACTIVITY

Description	15-Methylprostaglandin E1 (15S-15-Methyl-PGE1) exhibits a positive chronotropic effect, increases the heart rate and levels of nifedipine ^[1] .								
In Vivo	<p>15-Methylprostaglandin E1 (0.01-100 nM) induces a long-lasting heart rate increase in a dose-dependent manner without altering heart contractility in guinea pig, which is probably altered by Na⁺/Ca⁺ concentration. MCE has not independently confirmed the accuracy of these methods. They are for reference only.</p> <table border="1"> <tr> <td>Animal Model:</td> <td>guinea pigs with isolated atria^[1]</td> </tr> <tr> <td>Dosage:</td> <td>0.01-100 nM</td> </tr> <tr> <td>Administration:</td> <td></td> </tr> <tr> <td>Result:</td> <td>Increased heart rate.</td> </tr> </table>	Animal Model:	guinea pigs with isolated atria ^[1]	Dosage:	0.01-100 nM	Administration:		Result:	Increased heart rate.
Animal Model:	guinea pigs with isolated atria ^[1]								
Dosage:	0.01-100 nM								
Administration:									
Result:	Increased heart rate.								

REFERENCES

[1]. Serdar Soydan A, et al., Further studies on the potent positive chronotropic effect of (15S)-15-methyl-prostaglandin E1 on the guinea-pig isolated spontaneously beating right atrium. *Gen Pharmacol.* 1992 Mar;23(2):187-91.

Caution: Product has not been fully validated for medical applications. For research use only.

Tel: 609-228-6898

Fax: 609-228-5909

E-mail: tech@MedChemExpress.com

Address: 1 Deer Park Dr, Suite Q, Monmouth Junction, NJ 08852, USA