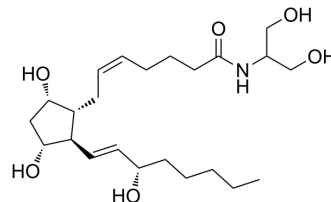


Prostaglandin F2 α serinol amide

Cat. No.:	HY-114810
CAS No.:	1135226-99-1
Molecular Formula:	C ₂₃ H ₄₁ NO ₆
Molecular Weight:	427.57
Target:	Prostaglandin Receptor
Pathway:	GPCR/G Protein
Storage:	Please store the product under the recommended conditions in the Certificate of Analysis.



BIOLOGICAL ACTIVITY

Description

Prostaglandin F2 α serinol amide is a serinolamide G protein-coupled receptor that increases calcium levels in human non-small cell lung cancer cells. Prostaglandin F2 α is also a luteinizing hormone in sheep and may be a nociceptive mediator in the spinal cord^{[1][2][3]}.

REFERENCES

- [1]. Richie-Jannetta R, et al. Structural determinants for calcium mobilization by prostaglandin E2 and prostaglandin F2 α glyceryl esters in RAW 264.7 cells and H1819 cells. *Prostaglandins Other Lipid Mediat.* 2010 Jun;92(1-4):19-24.
- [2]. McCracken J A, et al. Prostaglandin F2 α identified as a luteolytic hormone in sheep[J]. *Nature New Biology*, 1972, 238(83): 129-134.
- [3]. Woodward DF, et al. Recent progress in prostaglandin F2 α ethanolamide (prostamide F2 α) research and therapeutics. *Pharmacol Rev.* 2013 Jul 26;65(4):1135-47.

Caution: Product has not been fully validated for medical applications. For research use only.

Tel: 609-228-6898

Fax: 609-228-5909

E-mail: tech@MedChemExpress.com

Address: 1 Deer Park Dr, Suite Q, Monmouth Junction, NJ 08852, USA