

File ..\DATA\2019\20191029\744\BIZ2019-028-CXL11.D Tgt Mass (CHM):

Injection Date : 29 Oct 19 9:10 am +0800 Seq. Line : 5

Sample Name : BIZ2019-028-CXL11 Location : PL-C-06

Acq. Operator : ZJ_1432 Inj : 1

Spec. Reported : MS Integration Inj Volume : 1 ul

Acq. Method : D:\Chem32\1\data\2019\20191029\744\1-POS-3MIN.M

Analysis Method : D:\CHEM32\1\DATA\2019\20191029\744\1-POS-3MIN.M

Catalog No : HY-114855 Batch#49976

Method Info : Mobile Phase: A: water(0.01%TFA) B:ACN(0.01%TFA)

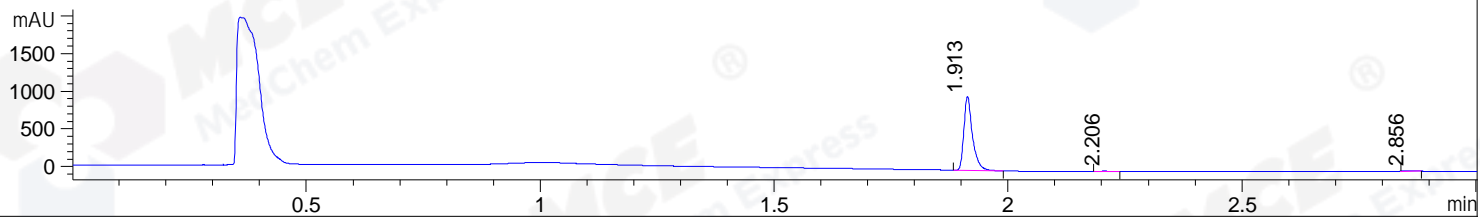
Gradient: 5% to 95%B within 1.3 min

Flow Rate :1.8ml/min

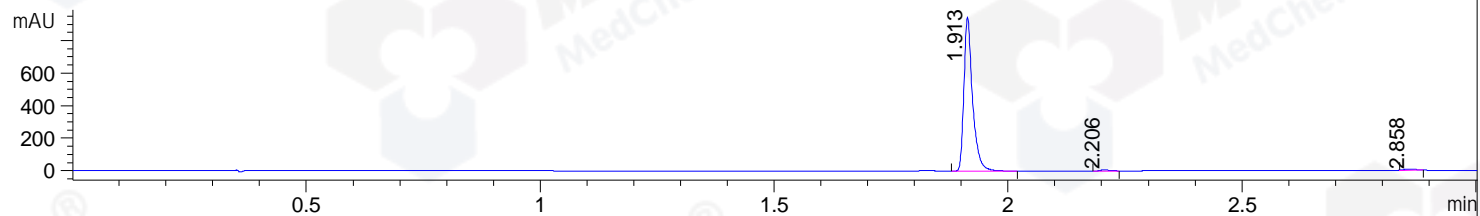
Column :SunFire C18, 4.6*50mm,3.5um A-RP-433

Oven Temperature : 45

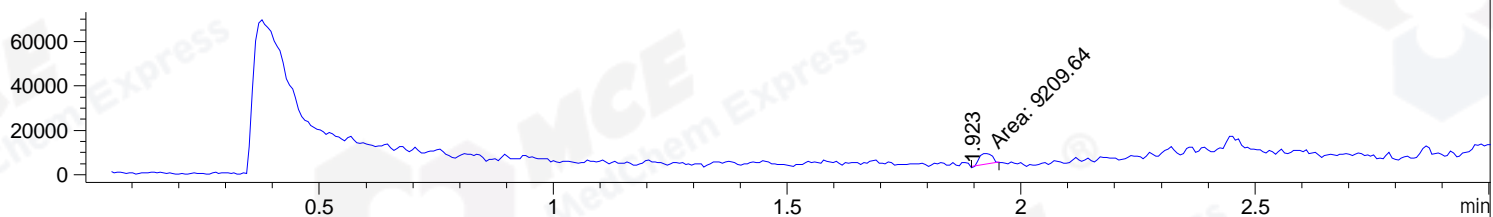
DAD1 B, Sig=214,4 Ref=off



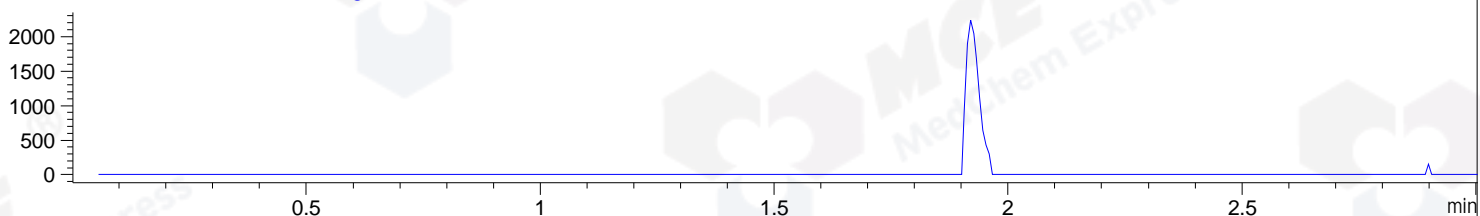
DAD1 C, Sig=254,4 Ref=off



MSD1 TIC, MS File ES-API, Pos, Scan, Frag: 70



Ion 246.93, MSD1 246.93, Target Mass 245.93 +H Positive, EIC=246.63:247.63



Integration Results for DAD1 B, Sig=214,4 Ref=off

RetTim	Width	Area	Height	Area%	MS (+)
1.91	0.02	1258.01	983.78	98.10	157
2.21	0.02	10.31	8.06	0.80	157
2.86	0.03	13.99	8.73	1.09	157

Integration Results for DAD1 C, Sig=254,4 Ref=off

RetTim	Width	Area	Height	Area%	MS (+)
1.91	0.02	1215.56	947.89	98.04	157
2.21	0.02	10.01	7.29	0.81	157
2.86	0.03	14.25	7.72	1.15	157

Integration Results for MSD1 TIC, MS File

RetTim	Width	Area	Height	Area%	MS (+)
1.92	0.03	9209.64	5158.35	100.00	157

Ret. Time: 1.92

<<<< POSITIVE SPECTRA >>>>

ES-API Positive

