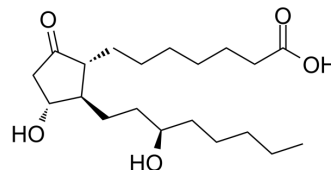


13,14-dihydro-15(R)-Prostaglandin E1

Cat. No.:	HY-114862
CAS No.:	201848-10-4
Molecular Formula:	C ₂₀ H ₃₆ O ₅
Molecular Weight:	356.5
Target:	Endogenous Metabolite
Pathway:	Metabolic Enzyme/Protease
Storage:	Please store the product under the recommended conditions in the Certificate of Analysis.



BIOLOGICAL ACTIVITY

Description

13,14-dihydro-15(R)-Prostaglandin E1 (13,14-dihydro-15(R)- PGE1) is an analog of 13,14-dihydro- PGE1 which has the hydroxyl group at C-15 in the unnatural R configuration^[1].

REFERENCES

[1]. Sinzinger H, et al. PGE1 and 13, 14-dihydro-PGE1 Increase Low-Density Lipoprotein Receptors and Improve Arterial Wall Lipid Metabolism//Prostaglandin E1: New Aspects on Pharmacology, Metabolism and Clinical Efficacy. Berlin, Heidelberg: Springer Berlin Heidelberg, 1991: 39-48.

Caution: Product has not been fully validated for medical applications. For research use only.

Tel: 609-228-6898

Fax: 609-228-5909

E-mail: tech@MedChemExpress.com

Address: 1 Deer Park Dr, Suite Q, Monmouth Junction, NJ 08852, USA