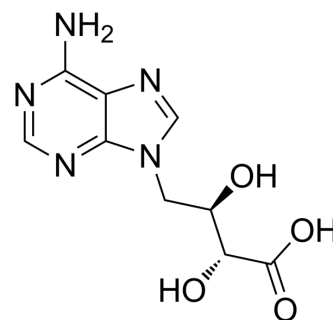


Eritadenine

Cat. No.:	HY-114866		
CAS No.:	23918-98-1		
Molecular Formula:	C ₉ H ₁₁ N ₅ O ₄		
Molecular Weight:	253.21		
Target:	Biochemical Assay Reagents		
Pathway:	Others		
Storage:	Powder	-20°C	3 years
		4°C	2 years
	In solvent	-80°C	6 months
		-20°C	1 month



BIOLOGICAL ACTIVITY

Description	Eritadenine (Lentinacin) is a S-adenosyl-L-homocysteine hydrolase (SAHH) inhibitor. Eritadenine can be found in secondary metabolites of shiitake mushrooms. Eritadenine lowers blood cholesterol levels and can be used in cardiovascular disease research ^{[1][2]} .
IC₅₀ & Target	SAHH ^{[1][2]} .

REFERENCES

[1]. Yamada T, et al. Structure and function of eritadenine and its 3-deaza analogues: potent inhibitors of S-adenosylhomocysteine hydrolase and hypocholesterolemic agents. *Biochem Pharmacol.* 2007 Apr 1;73(7):981-9.

[2]. Morales D, et al. Effect of traditional and modern culinary processing, bioaccessibility, biosafety and bioavailability of eritadenine, a hypocholesterolemic compound from edible mushrooms. *Food Funct.* 2018 Dec 13;9(12):6360-6368.

Caution: Product has not been fully validated for medical applications. For research use only.

Tel: 609-228-6898

Fax: 609-228-5909

E-mail: tech@MedChemExpress.com

Address: 1 Deer Park Dr, Suite Q, Monmouth Junction, NJ 08852, USA