

## Eritadenine

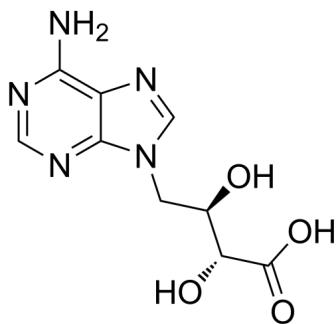
Cat. No.: HY-114866  
Batch No.: 336497  
CAS No.: 23918-98-1  
Molecular Formula: C<sub>9</sub>H<sub>11</sub>N<sub>5</sub>O<sub>4</sub>

### ANALYTICAL DATA

Theoretical: C(42.69%), H(4.38%), N(27.66%)

Result: C(38.80%), H(4.60%), N(24.90%)

Chemical Structure:



**Caution: Product has not been fully validated for medical applications. For research use only.**

Tel: 609-228-6898

Fax: 609-228-5909

E-mail: [tech@MedChemExpress.com](mailto:tech@MedChemExpress.com)

Address: 1 Deer Park Dr, Suite Q, Monmouth Junction, NJ 08852, USA